



EMS Patient Movement Escalation Framework for Washington State

**An Annex to Washington State Concept of Operations 2026
for the FIFA Men's World Cup**

V.1 FINAL Updated 04.13.2026

Table of Contents

Executive Summary 3

 EMS Patient Movement Escalation Framework Flow chart 4

 Left-Hand Detail of the Framework 5

 Right-Hand Detail of the Framework 6

Purpose and Scope 7

Local/Regional Response 7

Activation of Additional Resources 7

Governor Proclamations and Presidential Declarations 8

 Governor Proclamation 8

 Presidential Declaration 9

Appendix A: Abbreviations 10



NORTHWEST HEALTHCARE RESPONSE NETWORK

Executive Summary

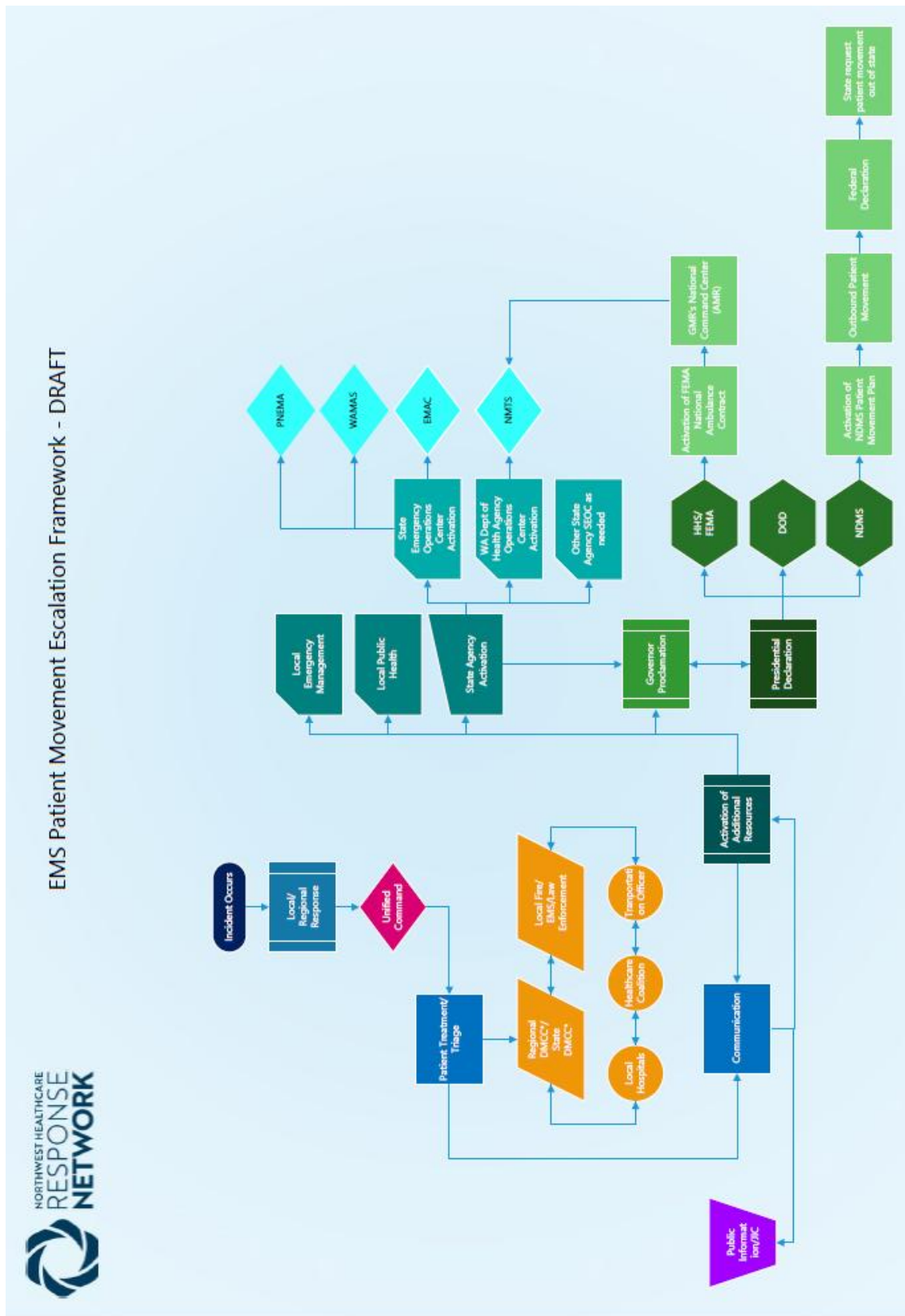
This document outlines, graphically and verbally, the process flow for requesting, accessing and utilization of patient transportation resources during a mass casualty incident when the local or mutual aid the numbers of patients requiring transportation exceeds the local and mutual aid resources within the area of the incident. This process includes the escalation from local to regional to state and to Federal levels and the agencies or organizations with responsibilities within this process.

The first three pages display the actual process flow with the first page showing the full process and the next two pages showing enlarged portions of the process (done for readability). The succeeding pages discuss the actual process.

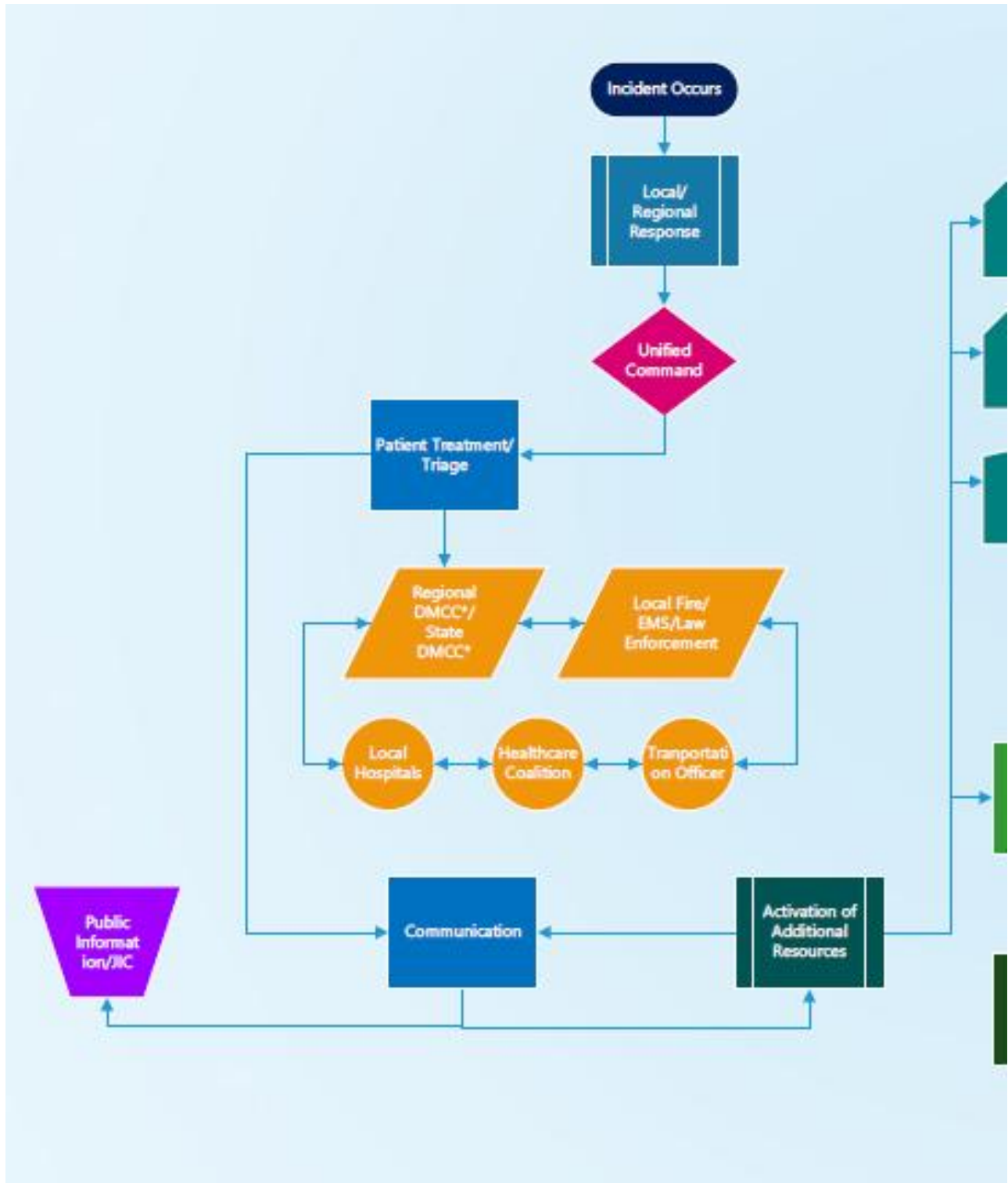
Framework Development Acknowledgement

This EMS Patient Movement Escalation Framework has been developed with support from EMS, WA DOH and WA EMD colleagues along with the Northwest Healthcare Response Network. Special thanks to AMR for their focused support throughout the state of Washington.

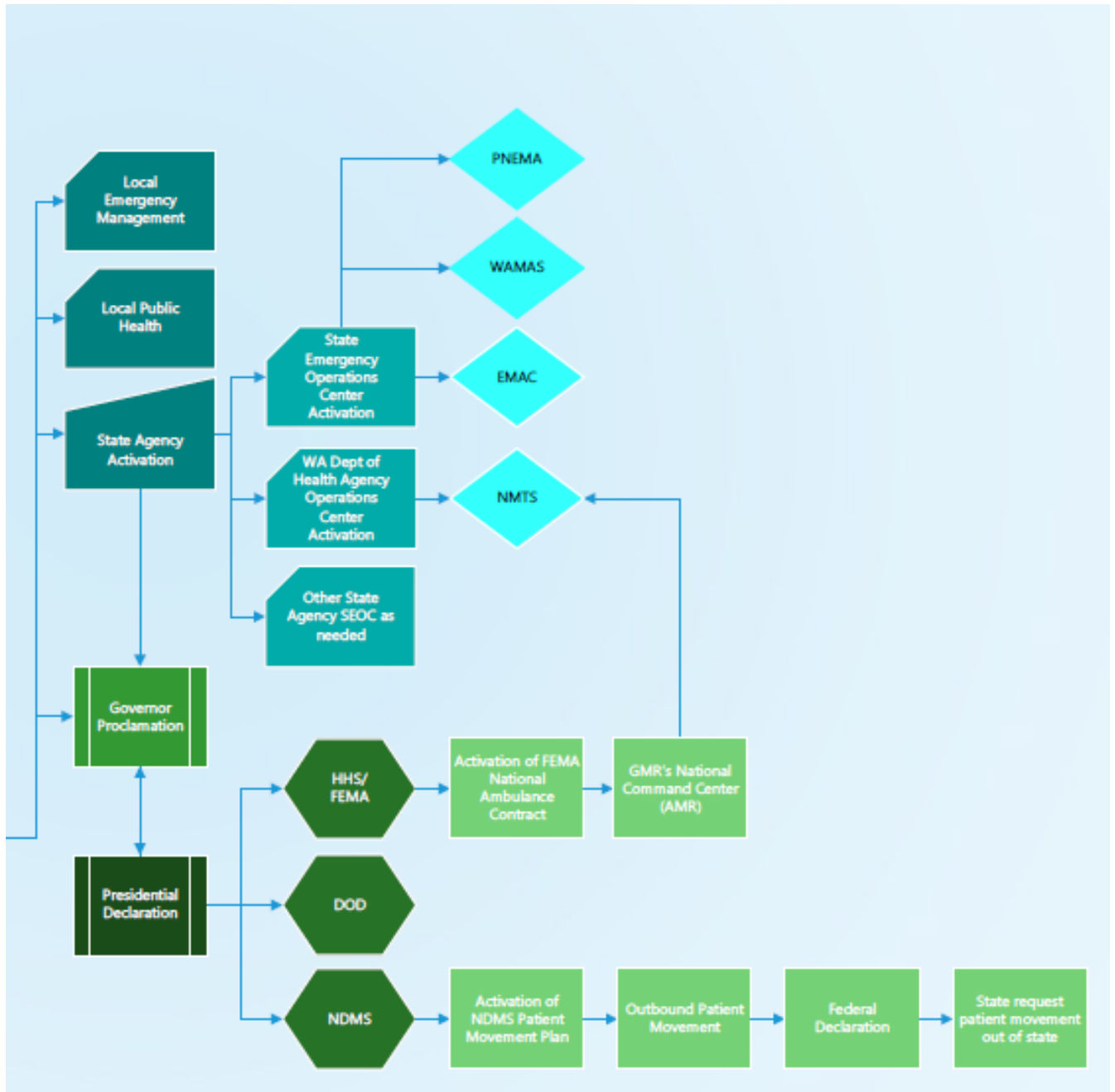
EMS Patient Movement Escalation Framework Flow chart



Left-Hand Detail of the Framework



Right-Hand Detail of the Framework



Purpose and Scope

This document aims to outline the activation and utilization of patient transportation resources in response to widespread emergencies, disasters, disease outbreaks, and/or other disruptive events (hereafter referred to as disruptive events) in Washington State. This includes the process of escalation for additional patient transportation resources, and the agencies/organizations responsible for executing escalation activities.

This document is not intended to be a comprehensive transportation plan and does not supersede or conflict with applicable laws or statutes. This document does not alter or impede the ability of agencies/organizations to carry out their specific authorities or perform their responsibilities under applicable laws, executive orders, and/or directives. This document does not apply to Large Scale Combat Operation (LSCO) events.

Local/Regional Response

Disruptive events oftentimes begin locally. In response to a disruptive event, local organizations and agencies activate and coordinate unmet needs through a unified command. A continuous flow of communication occurs amongst local response organizations, with activities including, but not limited to, the following:

- Emergency Medical Services (EMS) triaging and communicating patient statuses.
- Local Fire and Police personnel forwarding information from the field.
- Healthcare facilities treat patients and communicate bed counts and capacities.
- Local Health Jurisdictions (LHJ) and Emergency Management (EM) coordinate information, resources, and mutual aid. Northwest Healthcare Response Network (NWHRN) can assist with coordination of communication and information.
- Disaster Medical Coordination Centers (DMCC) help determine local/regional patient placement, with the State DMCC helping coordinate the DMCCs, if needed.

Activation of Additional Resources

Depending on the nature and scale of the disruptive event, additional organizations and/or resources may need to be activated, including but not limited to the following:

- State Agency Activation
 - WA State Emergency Operations Center (EOC)

- Operated by the WA State Emergency Management Division (EMD).
- Oversees requests to/from the Pacific Northwest Emergency Management Arrangement (PNEMA), the Emergency Management Assistance Compact (EMAC), and the Washington Mutual Aid System (WAMAS).
- WA State Department of Health (DOH) Emergency Operations Center
 - Oversees requests to/from the National Medical Transport and Support (NMTS) (also known as the National Ambulance Contract).
- Other State Agencies as needed.
- Joint Information Center (JIC) and/or Public Information Officer (PIO) coordination.
- Upon activation, State-level resources and mutual aid can assist impacted jurisdictions.

Governor Proclamations and Presidential Declarations

Governor Proclamation

The Governor may proclaim a state of emergency when a public disorder, disaster, energy emergency or riot exists in the state that affects life, health, property, or public peace pursuant to Revised Code of Washington (RCW) 43.06.010. The proclamation activates certain capabilities for the governor under state law, including the ability to waive or suspend certain statutes.

WA State EMD, under Emergency Support Function (ESF) 14, leads the collection of information for the proclamation, which includes but is not limited to planning documents, field reports, news media, and social media. This information helps create a common operating picture for EMD partners and helps build the narrative for a Presidential Emergency or Disaster Declaration. Proclamation information pertaining to needed resources and unmet needs is also received from WA State DOH.

A Governor Proclamation often comes before a Presidential Declaration, but a Presidential Declaration may occur first for major disruptive events with clear and widespread future impacts. Governors are then responsible to follow up with a Proclamation as appropriate. Other instances in which a Governor Proclamation could be made include, but are not limited to, the following:

- Other States requesting assistance from WA State via PNEMA or EMAC
- Following a Proclamation from a neighboring state (ex: wildfire crossing state lines).

Requests for an Emergency or Disaster Declaration from the President are made by the Governor of the affected State. For an emergency or disaster to be declared, State and Federal

officials first conduct a preliminary damage assessment (PDA) to estimate the extent of the damage and its impact on individuals and public facilities. This information is included in the Governor's request to show that the disaster is of such severity and magnitude that effective response is beyond the capabilities of the State and local governments, and that Federal assistance is necessary. Federally recognized Tribal Governments have the option of pursuing a declaration directly from the President.

Presidential Declaration

All emergency and major disaster declarations are made solely at the discretion of the President of the United States. There are two types of disaster declarations provided for in the Stafford Act: emergency declarations and major disaster declarations. Both declaration types authorize the President to provide supplemental federal disaster assistance. However, the scope and amount of assistance available differ.

At the federal level, patient movement activities are coordinated through the National Disaster Medical System (NDMS). However, NMTS activities are coordinated through the Department of Health and Human Services (HHS) and the Federal Emergency Management Agency (FEMA) via the Global Medical Response (GMR) National Command Center. The Department of Homeland Security (DHS) may also choose to elevate federal assets prior to or immediately following a disruptive event.

GMR is the primary contractor for FEMA's national ambulance services. The US Department of Health and Human Services works with FEMA to coordinate deployment of EMS services executed by GMR's National Command Center. Contact information for GMR representatives can be found at the end of this document.

Unlike EMAC and PNEMA requests, NMTS requests require both a Governor Proclamation and a Presidential Declaration in order to activate. Resources received from NMTS are coordinated through the WA State DOH Emergency Operations Center. Once the declaration is enacted, federal resources, including federal EMS resources, are able to assist impacted States.

Appendix A: Abbreviations

DHS – US Department of Homeland Security

DMCC – Disaster Medical Control Center

DOH – Washington State Department of Health

EM – Emergency Management

EMAC – Emergency Management Assistance Compact

EMD – Washington State Emergency Management Division

EMS – Emergency Medical Services

EOC – Emergency Operations Center

ESF – Emergency Support Function

FEMA – Federal Emergency Management Agency

GMR – Global Medical Response

HHS – US Department of Health and Human Services

JIC – Joint Information Center

LHJ – Local Health Jurisdiction

LSCO – Large Scale Combat Operation

NDMS – National Disaster Medical System

NMTS – National Medical Transport and Support

NWHRN – Northwest Healthcare Response Network

PIO – Public Information Officer

PNEMA – Pacific Northwest Emergency Management Arrangement

WAMAS – Washington Mutual Aid System