



NORTHWEST HEALTHCARE
Response Network.

PREPARE.

RESPOND.

Long-Term Care: Emergency Preparedness Webinar Series

RECOVER.

Nitty Gritty

- This is being recorded—please do not discuss confidential information.
- Make sure you are muted unless speaking. No need to have video turned on unless you're speaking.
- There will be interactive polling questions. If you are attending by phone and unable to participate, you can share responses in the chat box or share your feedback in our follow up email.
- This is an opportunity for open conversations—we need to hear from you! Please raise a hand or put comments into the chat section.
- As polls or questions pop-up, please respond so we can gather necessary info.

That moment when you realize you weren't on mute after saying embarrassing things on camera



Agenda & Purpose

To support LTC information sharing and discussions regarding emergency preparedness, response and planning while connecting facilities and supporting partners across the state to build a more resilient system and robust capabilities.

AGENDA:

- Introductions
- Background on this forum
- Lessons from real-world responses
- Current resources
- Gather input on topics and tools that are needed
- Upcoming webinar goals, ideas, and projects



Introductions & Background

Northwest Healthcare Response Network-

- Elya Baltazar, District Manager
- Susan Kopplemann, Director of Preparedness and Response

Washington State Department of Social and Health Services- Aging & Long-Term Support Administration

❖ **Division of Residential Care Services**

- Richard Freed, Emergency Preparedness Coordinator
- Amy Abbott, Director
- Bett Schlemmer, Special Assistant to Director

❖ **Division of Home and Community Services**

- Jacqueline Cobbs, Deputy Director of HQ Operations

❖ **Developmental Disabilities Administration**

- Charles Weedin, Deputy Director of Business Operations

Washington State Department of Veterans Affairs-

- Crystal Hauck, Safety and Emergency Preparedness Manager

LeadingAge Washington

- Laura Hofmann, Director of Clinical and Nursing Facility Regulatory Services

Washington Health Care Association

- Elena Madrid, Executive Vice President for Education and Regulatory Affairs

Comagine

- Nina Sanderson, Senior Improvement Advisor

Adult Family Home Council

- Karen Cordero, Director of Education and Support

Prestige Care

- Tom Rollins



Introductions- NWHRN

Our coalition's function is to connect all the partners, but anyone can take the initiative!

- Develop innovative solutions to sustain patient care during crises.
- Ensure a shared awareness of the status of healthcare to inform decision making.
- Provide real time support to healthcare to effectively manage crises.
- Build healthcare resiliency strategy through policy and advocacy.



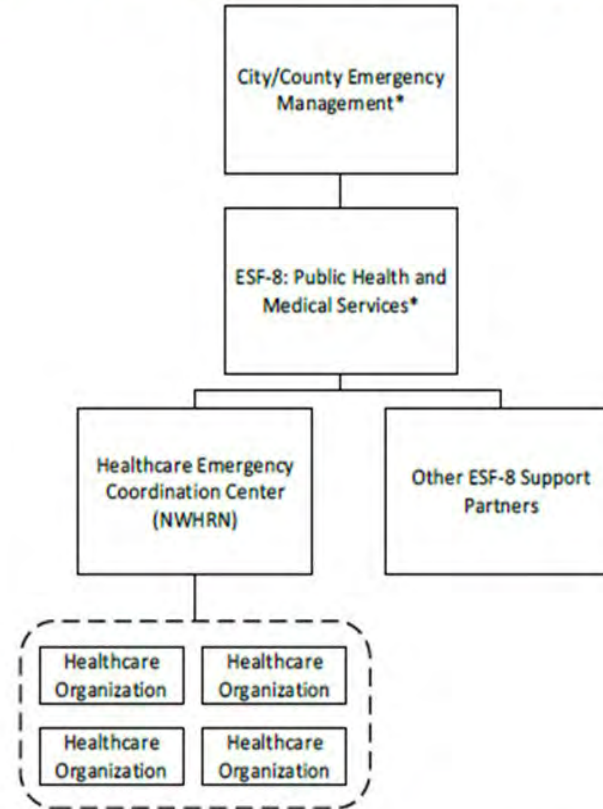
ASPR Definition of a Healthcare Coalition

1.3.1 Defining the MSCC Healthcare Coalition

A Healthcare Coalition is a group of healthcare organizations in a specified geographic area that agree to work together to enhance their response to emergencies or disasters. The response objectives of the Coalition will vary depending on how the Coalition is constructed in a particular area. Example objectives include promoting situational awareness, facilitating resource sharing, and coordinating response actions among its member organizations. The Coalition also promotes the efficient interface of its member organizations with jurisdictional authorities (Tier 3). *As noted earlier, the Coalition serves as a coordinating entity during incident response; it does not supplant the relevant incident command authority.*

U.S. Department of Health & Human Services/Office of the Assistant Secretary for Preparedness and Response (ASPR) <https://www.phe.gov/Preparedness/planning/mscc/healthcarecoalition/chapter1/Pages/healthcarecoalition.as>

Figure 1: Command, Control, and Coordination of Healthcare Response Coordination



*NWHRN supports and represents for all counties activated in a response

Current Resources: How we connect to support?

- Sector-Specific work
- District Level Discussions
- Coordinating & Supporting Statewide Calls
- Regional Planning
- Local Level Integration
- Executive Level Engagement
- Training & Exercises
- Finding & Addressing Gaps



Real-World Lessons Learned

- Erwin Steinlein- facilities manager at Montesano Health and Rehab during the fire/evacuation

LESSONS LEARNED FROM A RURAL LONG TERM CARE INCIDENT

~MONTESANO LTC FIRE & FULL EVACUATION~

- **ENGAGE PARTNERS WHEN CREATING PLANS AND EXERCISE THEM WITH LOCAL RESPONDERS.**
- **HAVE CRITICAL PATIENT DETAILS AND INFO READY FOR QUICK EVACUATION.**
- **PHONE A FRIEND-KNOW YOUR LOCAL AND REGIONAL RESOURCES AND THEIR 24/7 CONTACT INFO.**
- **PREPARE FACILITIES TO CONTINUE PATIENT CARE AT THE EVACUATION SITE, WORK ALONGSIDE RESPONSE PARTNERS FOR PATIENT RELOCATION, AND ASSIST IN COORDINATION EFFORTS.**
- **DEVELOP VIRTUAL PLATFORMS TO ENSURE RESPONSE AGENCIES AND COMMAND SITES ARE ABLE TO COMMUNICATE DURING RESPONSE.**
- **ENSURE PATIENT TRACKING IS IN PLACE TO SUPPORT RELOCATION, FAMILY REUNIFICATION AND PLACEMENT RECONCILIATION.**
- **SAY YES. SUCCESSFUL RESPONSE ONLY HAPPENS WITH COLLABORATION, PARTNERING TO BOLSTER YOUR FACILITY/COMMUNITY, AND THE WILLINGNESS TO RESPOND IN SUPPORT OF ONE ANOTHER.**



Wildfire Situational Awareness & Resources

As of July 2024, multiple wildfires have resulted in evacuation statuses, primarily in Central and Eastern Washington.

- Predictions anticipate a “worse-than-average” fire season through July and August.
- Slide Ranch/Mission Road in Yakima County:
 - Multiple providers experienced power outages.
 - Several providers near evacuation lines on standby.
- Keys Road fire near Yakima:
 - Level 3 evacuation initiated with no prior warning.
 - Power outages impacted several providers in the area.
- Grove Fire outside Spokane:
 - Immediate trigger of a level 3 evacuation.
 - Smoke from fires reported as issues among homes.
- 4th of July:
 - Multiple large-scale fires occurred simultaneously resulting in evacuations.
 - At least one Adult Family Home was evacuated.

Resources for Providers

- Dear Provider Letters on the topic of Heat, Wildfires, Smoke, and Public Power Safety Shutoffs published in spring and early summer.
- Presentation on Summer Hazards posted to RCS website.
- RCS Emergency Preparedness Coordinator presented on preparedness to LeadingAge, WHCA, and AFH Council.
- Work has restarted on the House Bill 1218 rulemaking project for emergency preparedness.
- Plan for a workshop/tabletop exercise during provider forums in August.

Residential Care Services for Wildfire Response

- Monitoring fires throughout the state.
- Will attempt contact with impacted or potentially impacted providers.
- Liaison for local, state, and federal agencies in large-scale disasters.
- Limitations to Response
 - Monitoring not conducted 24/7, primarily during normal business hours.
 - Information limited to public channels.
 - No mass-communication abilities.

What is needed?

- We will be using polls to help us gather information for future LTC sessions to find out what is needed, interesting topics, the best frequency and easiest platform for ongoing work.
- If you are attending by phone and unable to participate in the polling, please send us your feedback or place answers in the chat section.
- We will review the feedback in real time and continue to define the next steps for this work!

Questions? Thank you!

CONTACT US:



nwhrn.org



@TheNetworkNWHRN