



About NWHRN: Healthcare Readiness and Response Coordination

Onora Lien, Executive Director
Susan Koppelman, Director of Preparedness and Response
August 6, 2024

“When a disaster hits, Americans rely on a fragmented healthcare system to miraculously mount a timely, cohesive, and effective [response] and recovery effort... Yet, the carefully orchestrated and sequenced medical responses to disasters lean on a disjointed health system.”

Closing the Seams: Developing an integrated approach to health system disaster preparedness, Price Waterhouse Coopers - HRI, 2007



What history shows us grounds us in our mission

- ✓ Collaboration and coordination is critical for readiness, continuity, surge and response.
- ✓ Healthcare needs a forum and access to share information, data, best practices, ideas, tools, work together to address common issues. This does not naturally exist.
- ✓ Effective response and resilience requires we work across the continuum of healthcare care.
- ✓ Healthcare functions regionally and with many cross-jurisdictional interdependencies (staff, supplies, resources, patient access and patient movement).
- ✓ Expertise in disaster medicine and the unique issues that affect healthcare delivery is not common knowledge or widespread daily practice within healthcare.



Network overview

501c3 independent nonprofit organization

Mission: We lead cross-sector, solution-oriented coordination to build **healthcare ecosystem resilience** to face emergencies, disasters, disease outbreaks, and other disruptive events.

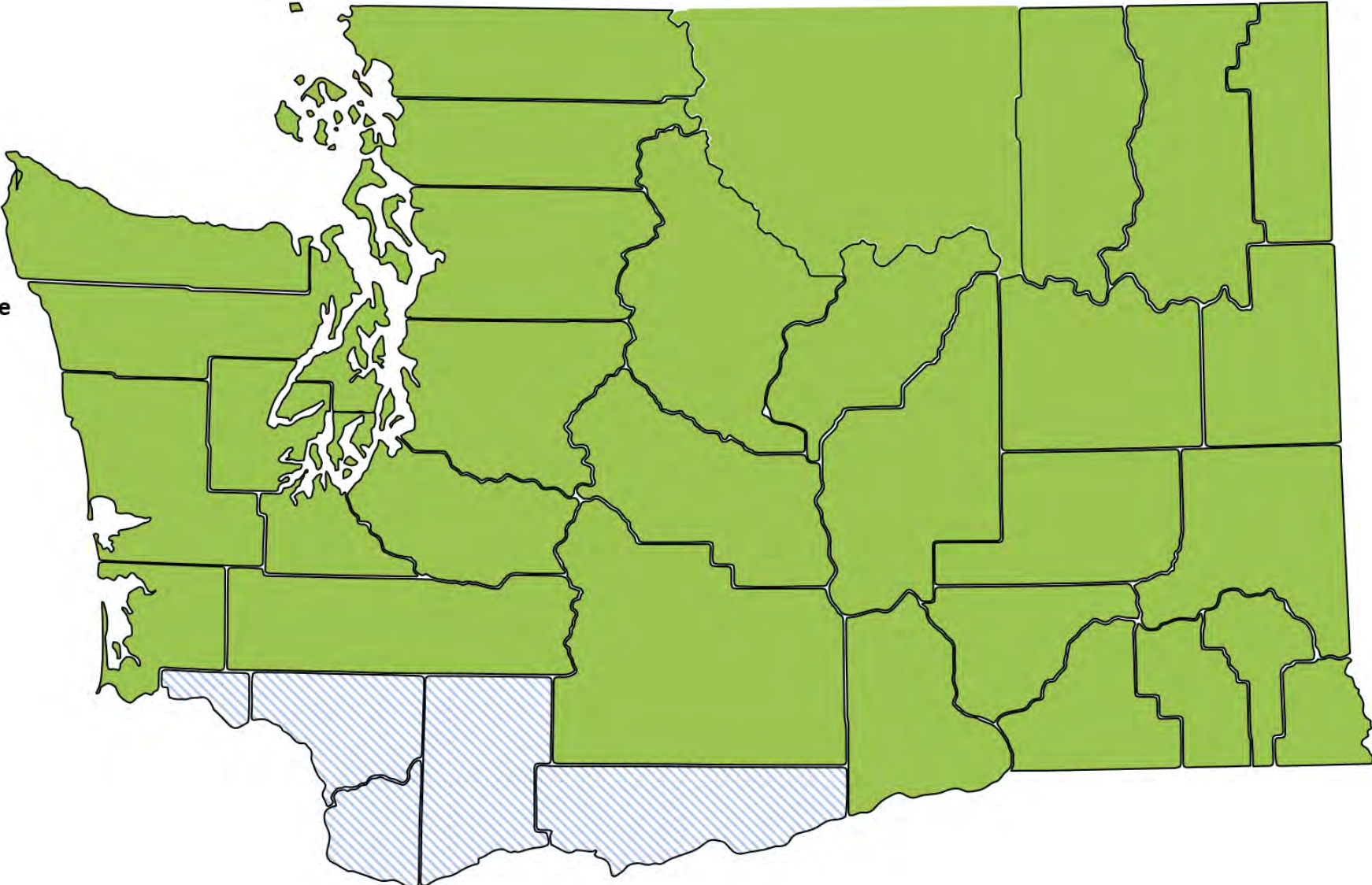
Vision: We envision a future with a resilient healthcare ecosystem that, through collective effort, **provides effective and equitable care to all.**



NWHRN Geographic Service Coverage

 NWHRN Full Scope of Services and Coverage

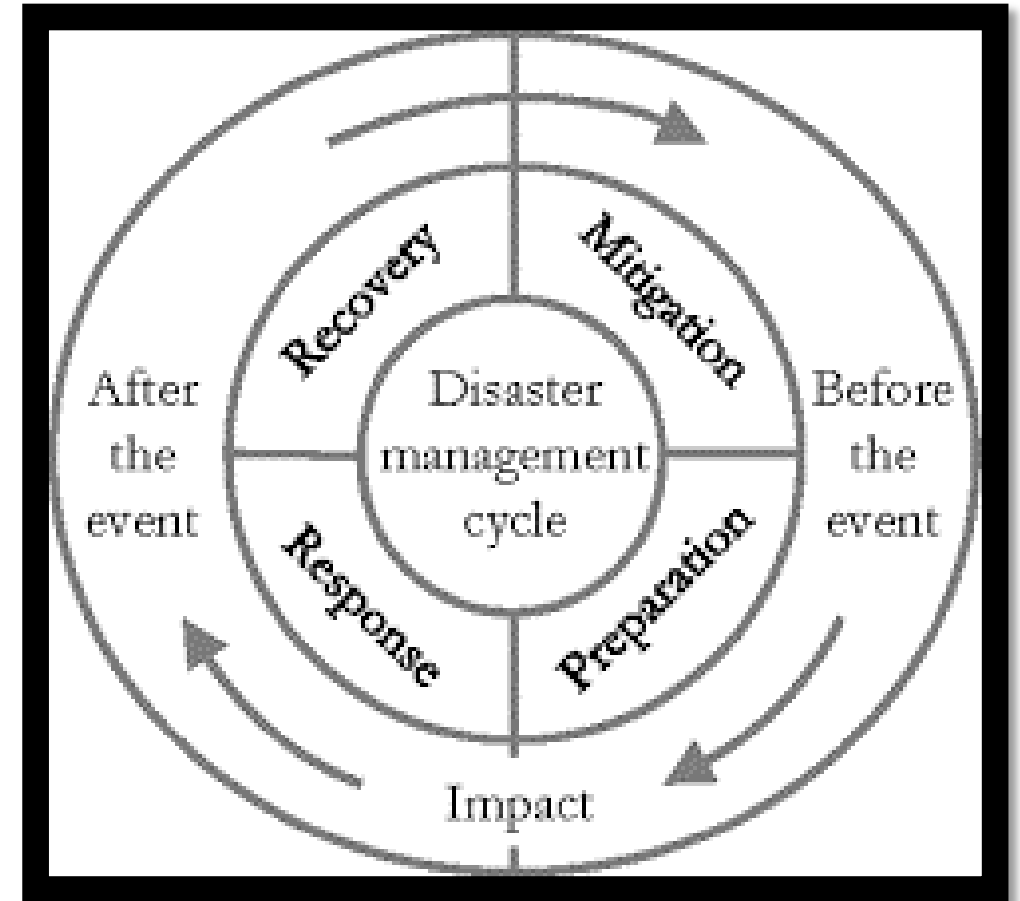
 Southwest WA Health Care Alliance



As of July 2024

Our Focus Areas

- **Ensure a common operating picture** of the status of our state's health care ecosystem
- **Create innovative solutions, plans, tools and resources** to sustain health care services and surge
- **Provide real-time support** to the health care ecosystem
- **Enhance disaster resilience** through advocacy for better policies and strategies



Partnerships, Collaboration & Coordination: Keys to Our Success

What We Do

- We focus on leading collaborative and coordinated planning, training, exercises, information-sharing and multi-agency healthcare responses.
- We organize our work based on how the healthcare system responds and what it needs to be most effective at providing patient care.
- We engage across the continuum of care and across geographies and specialties.
- We build bridges, reduce silos, enhance collaboration, leverage interdependencies and provide and coordination to support to maximize outcomes and impact.
- We work within and in support of local and/or state health and medical/ESF8 structures.

What We Don't Do

- Replace local and/or state health or emergency management responsibilities or authorities.
- Replace local or state organizational responsibilities or authorities.
- Regulate or perform regulatory duties or responsibilities.
- Focus on the needs of only a single organization or county.
- Compete with healthcare or public health.
- Work for political gain nor have a political affiliation.



Examples of what we want to achieve

We work to ensure that during emergencies, disasters or other disruptive events, the healthcare ecosystem across our region and state can effectively:

- ✓ **Manage a surge** of adult and pediatric patients during emergencies, disasters, using the best clinical practices during any type of hazard
- ✓ Support **patients getting the right level of care at the right time** anywhere in the state or region
- ✓ **Coordinate and manage** healthcare facility evacuations
- ✓ **Receive, distribute and track patients** across organizations and county lines
- ✓ **Support** healthcare and community partners in facilitating the **reunification of families**
- ✓ **Triage and treat** the disaster-related mental health needs of their staff and the community
- ✓ **Protect the health and safety of their staff and patients and those needing healthcare services**
- ✓ Expediently and **effectively share healthcare situational awareness**, emergency information and resources to provide a common operating picture
- ✓ **Work effectively together** and with local, state and federal response authorities during an emergency so that patients and those that need it, get care
- ✓ **Maintain essential services and return to normal operations** quickly after a disaster or disruptive events
- ✓ **Learn from these events and improve our collective capabilities and resilience.**

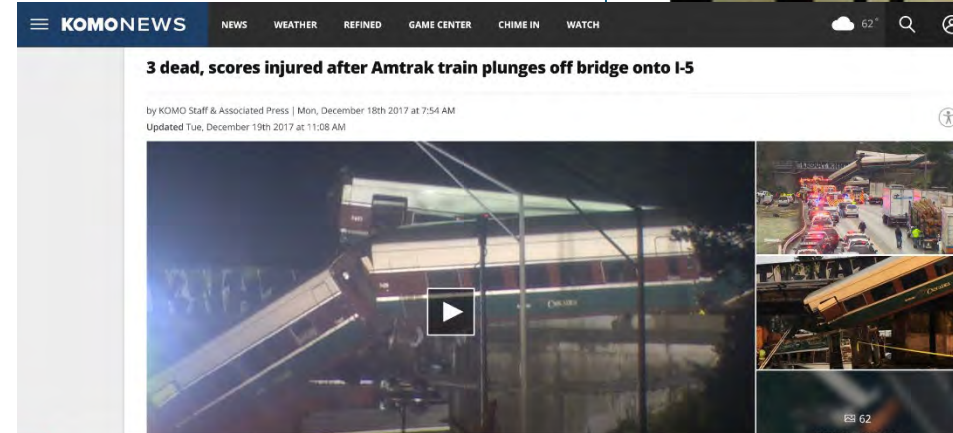


The Network is the **only independent organization** in Washington to lead healthcare focused multi-agency, multi-sector and multi-jurisdictional coordination across healthcare and emergency response organizations.



We prepare so we can respond

We efficiently respond to healthcare emergencies across our state – aiming to **ensure continuity of health care for all during emergencies and disasters.**



Our Work Saves lives

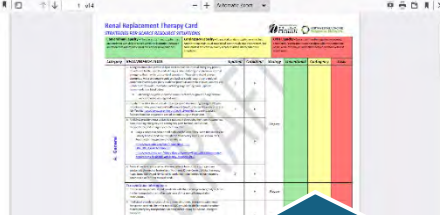
It starts with the foundation of strong relationships, trust and shared commitment to collaboration



Washington Medical Coordination Center (adult and pediatric)



Pediatric Acute and Behavioral Health Coordination and Surge Capabilities



Surge and Scarce Resource Management and Mitigation Strategies for Patient Care



Innovating and Managing Data, Situational Awareness and Information Sharing



Post Acute Care partnerships during extreme heat responses and evacuations



Regional healthcare coordination and alignment on internal policy.



Our Work Saves lives: Responses 2020-2024

- COVID pandemic
- “Triple-demic” respiratory season response
- Heat dome/heatwave
- Wildfires
- Floods
- Snowstorms and extreme cold
- Civil Unrest
- Cyber
- Facility Evacuation
- Vaccines and medical countermeasures
- Cybersecurity and IT outages



What comes next

- ✓ Outreach to confirm or get new contacts
- ✓ Adding partners to existing opportunities and information sharing
- ✓ Meeting to learn more about local successes, needs, opportunities and identifying a path forward with you and partners
- ✓ 24/7 Duty Officer support
- ✓ Moving forward with BP1 requirements starting with capabilities assessment

Questions & Discussion



Onora Lien

Executive Director

Onora.Lien@NWHRN.org

206-423-1352

Susan Koppelman

Director of Preparedness
and Response

Susan.Koppelman@NWHRN.org

206-858-0004