

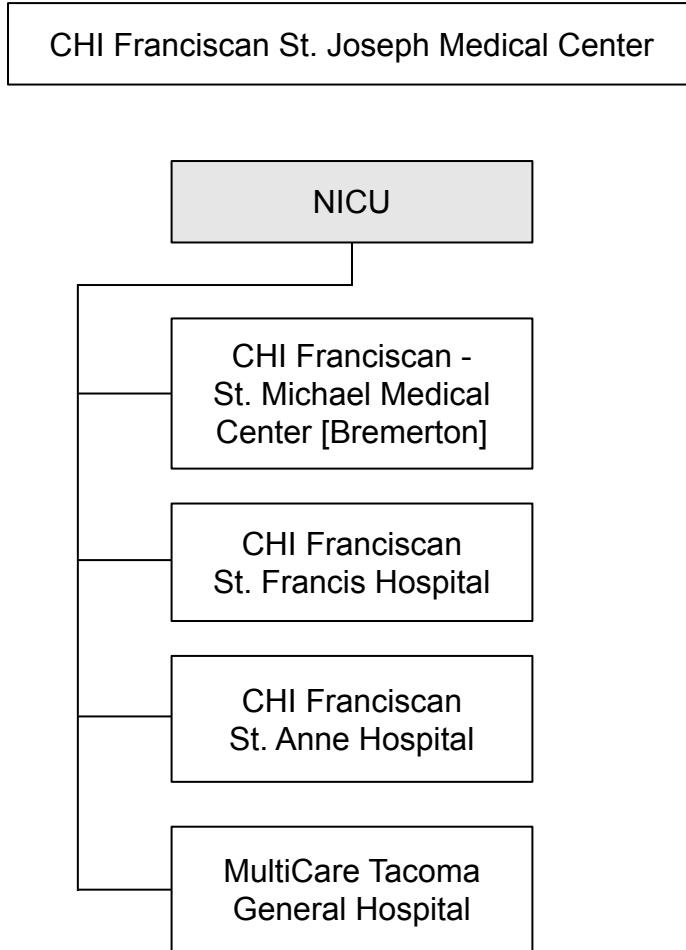


Appendix E

REGIONAL NEONATAL AND PEDIATRIC EVACUATION LOCATIONS

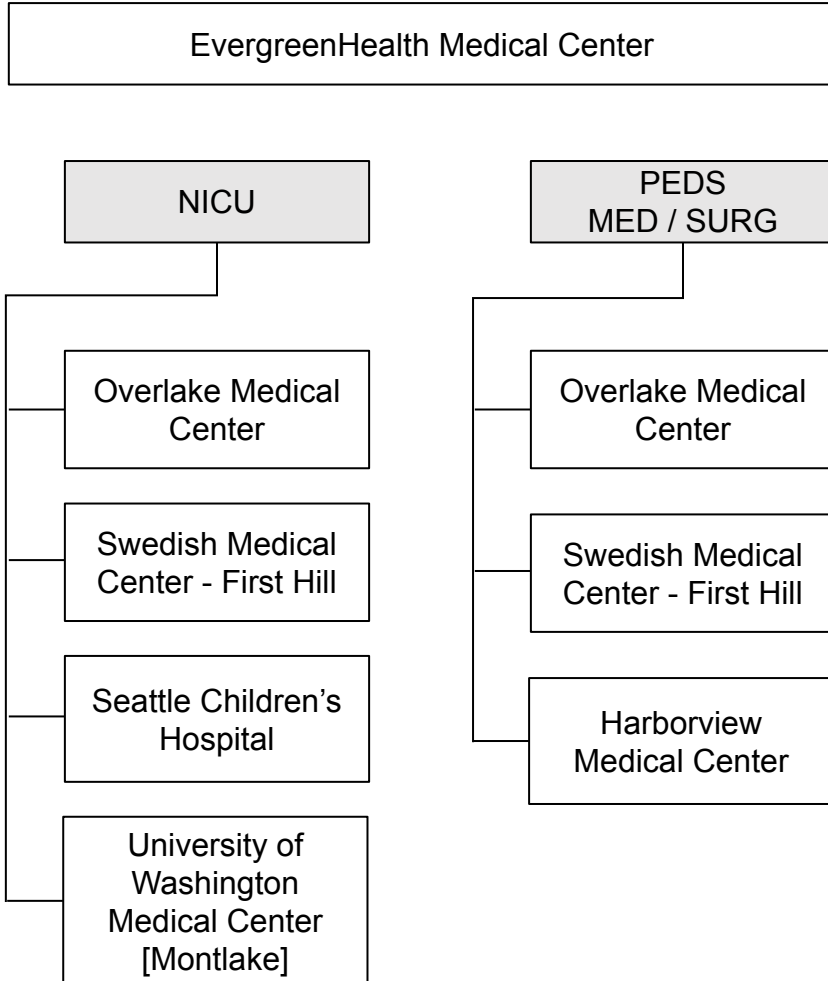
CHI Franciscan St. Joseph Medical Center

Neonatal Evacuation



EvergreenHealth Medical Center

Neonatal and Pediatric Evacuation

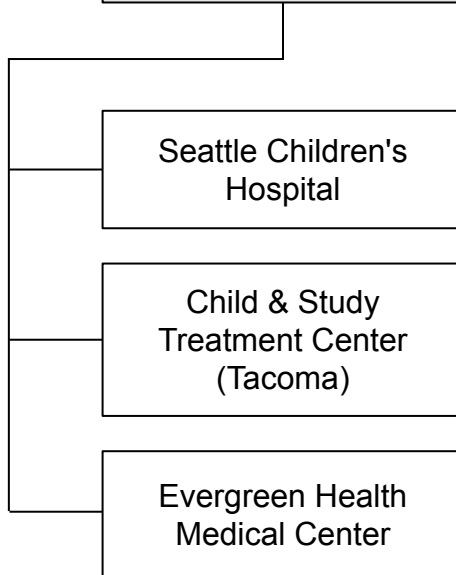


Fairfax Behavioral Hospital

Pediatric Evacuation

Fairfax Behavioral Hospital

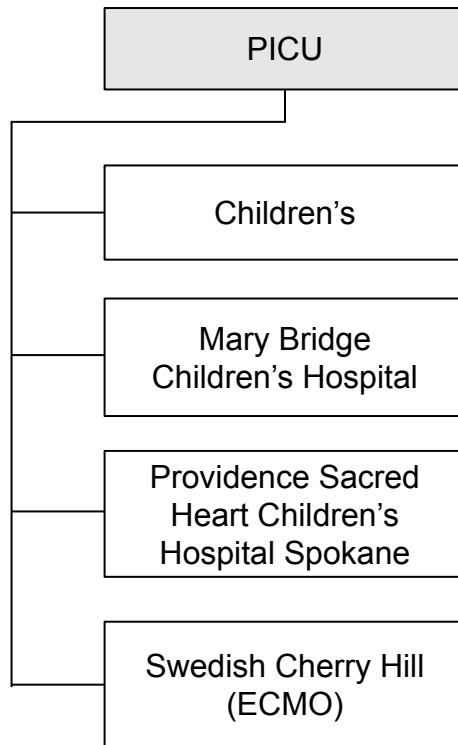
BEHAVIORAL



Harborview Medical Center

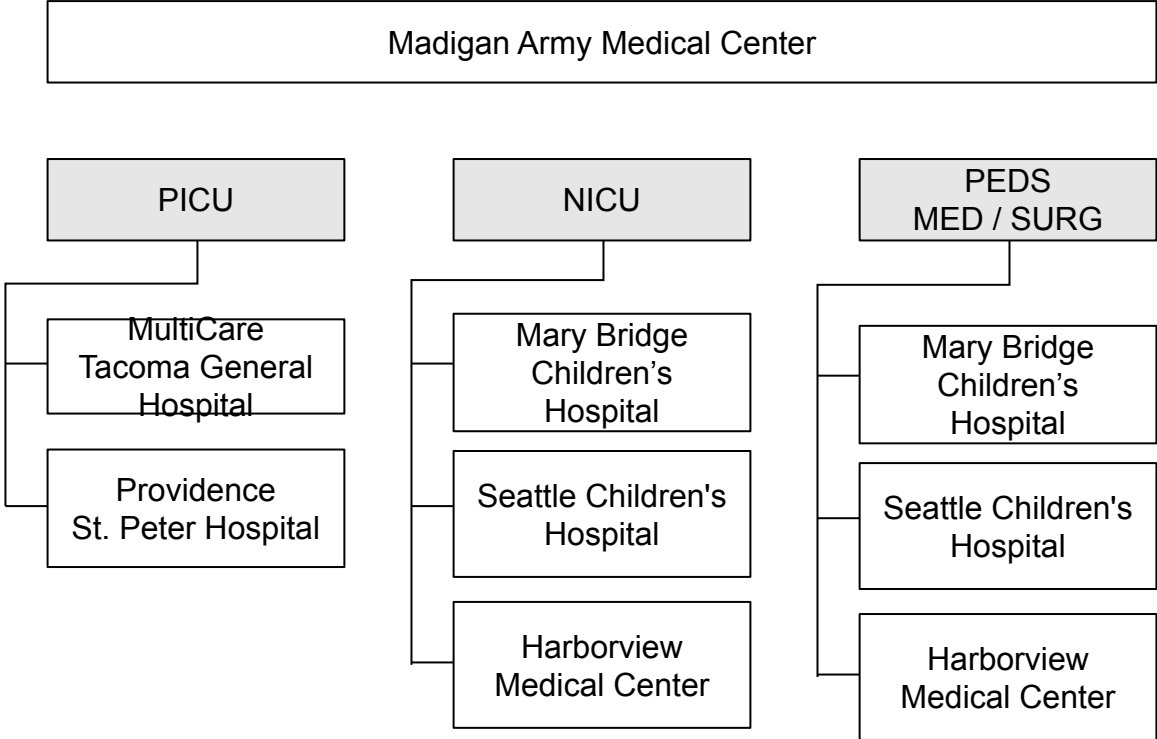
Pediatric Evacuation

Harborview Medical Center



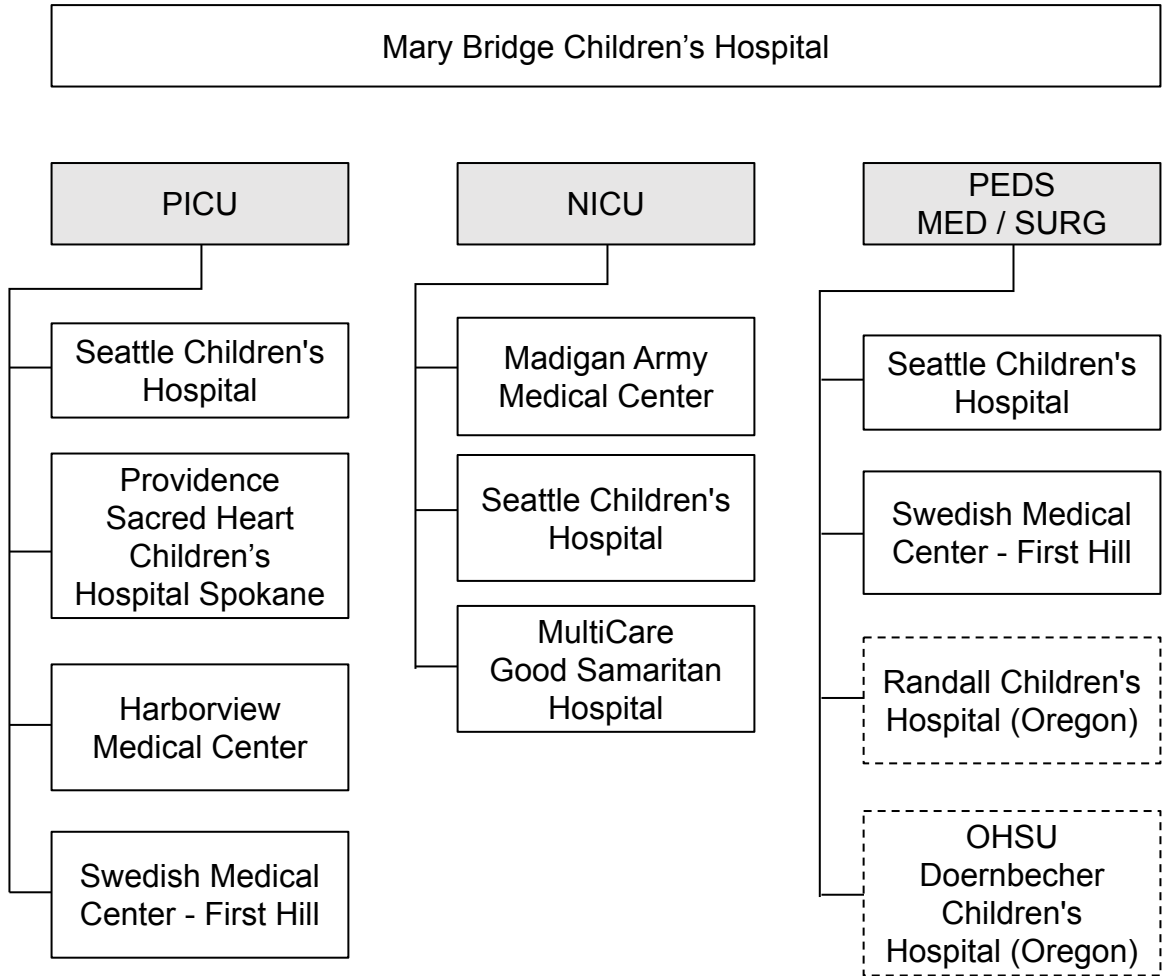
Madigan Army Medical Center (Approval Required)

Neonatal and Pediatric Evacuation



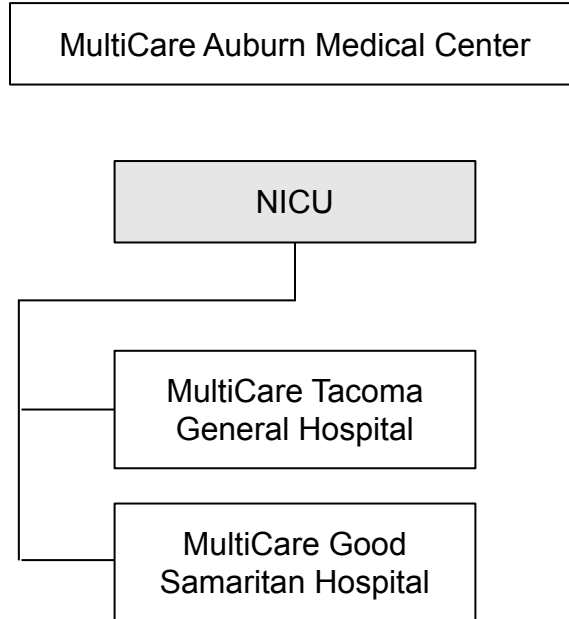
Mary Bridge Children's Hospital

Neonatal and Pediatric Evacuation



MultiCare Auburn Medical Center

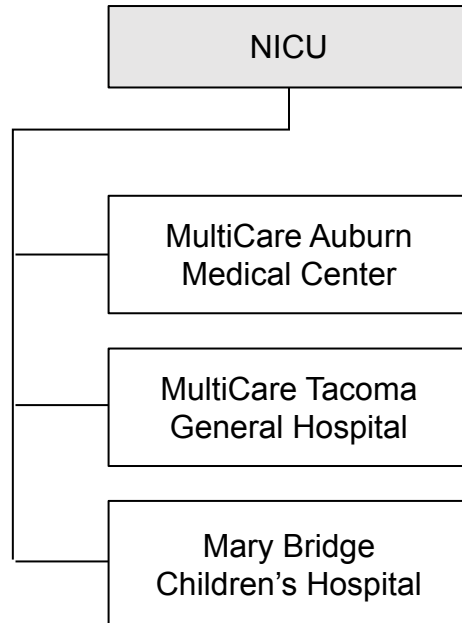
Neonatal Evacuation



MultiCare Good Samaritan Hospital

Neonatal Evacuation

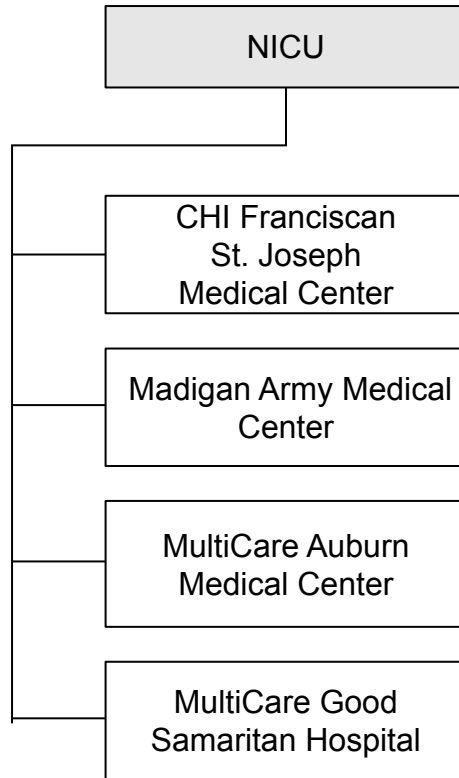
MultiCare Good Samaritan Hospital



MultiCare Tacoma General Hospital

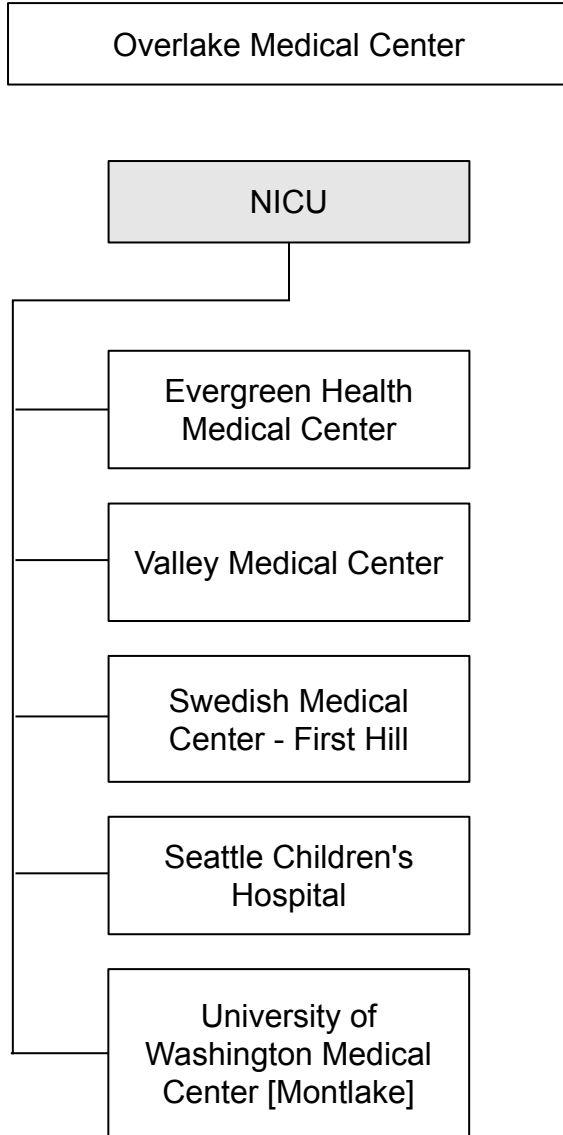
Neonatal Evacuation

MultiCare Tacoma General Hospital



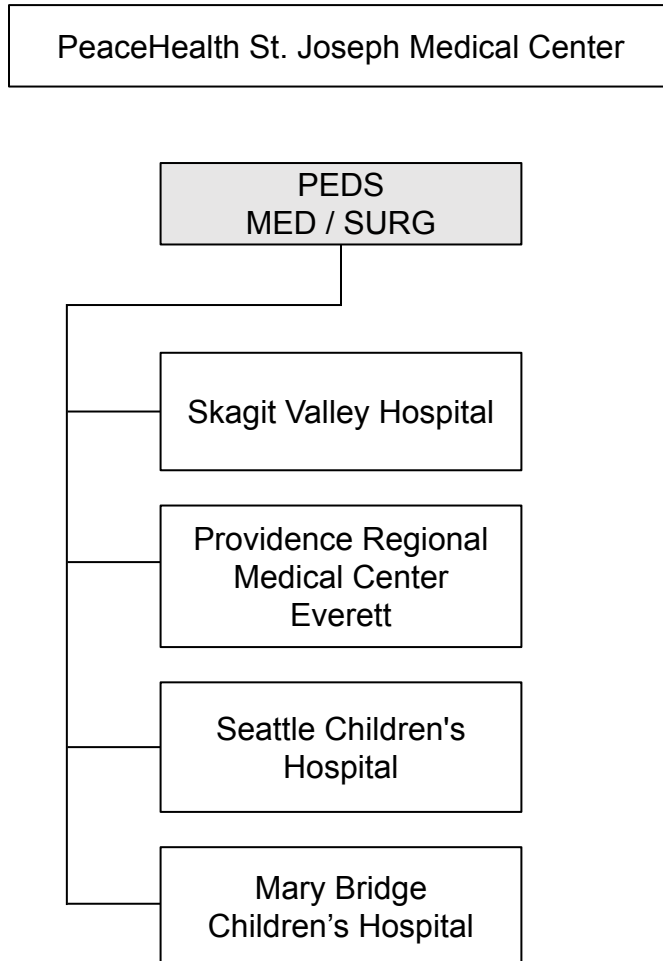
Overlake Medical Center

Neonatal Evacuation



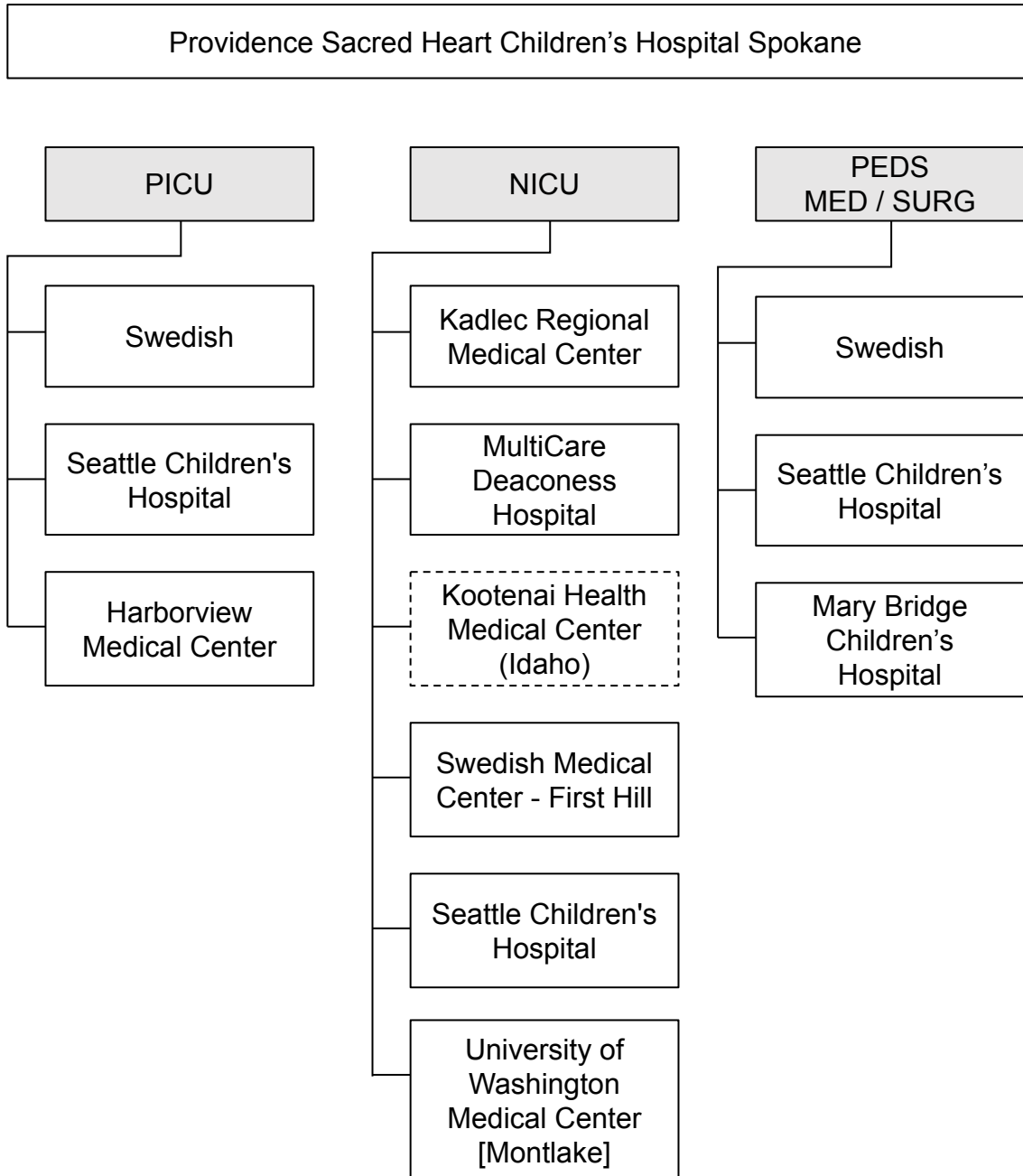
PeaceHealth St. Joseph Medical Center

Pediatric Evacuation



Providence Sacred Heart Children's Hospital Spokane

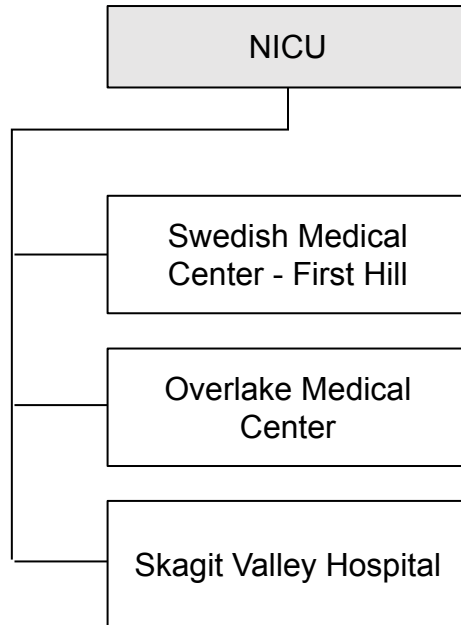
Neonatal and Pediatric Evacuation



Providence Everett Regional Medical Center

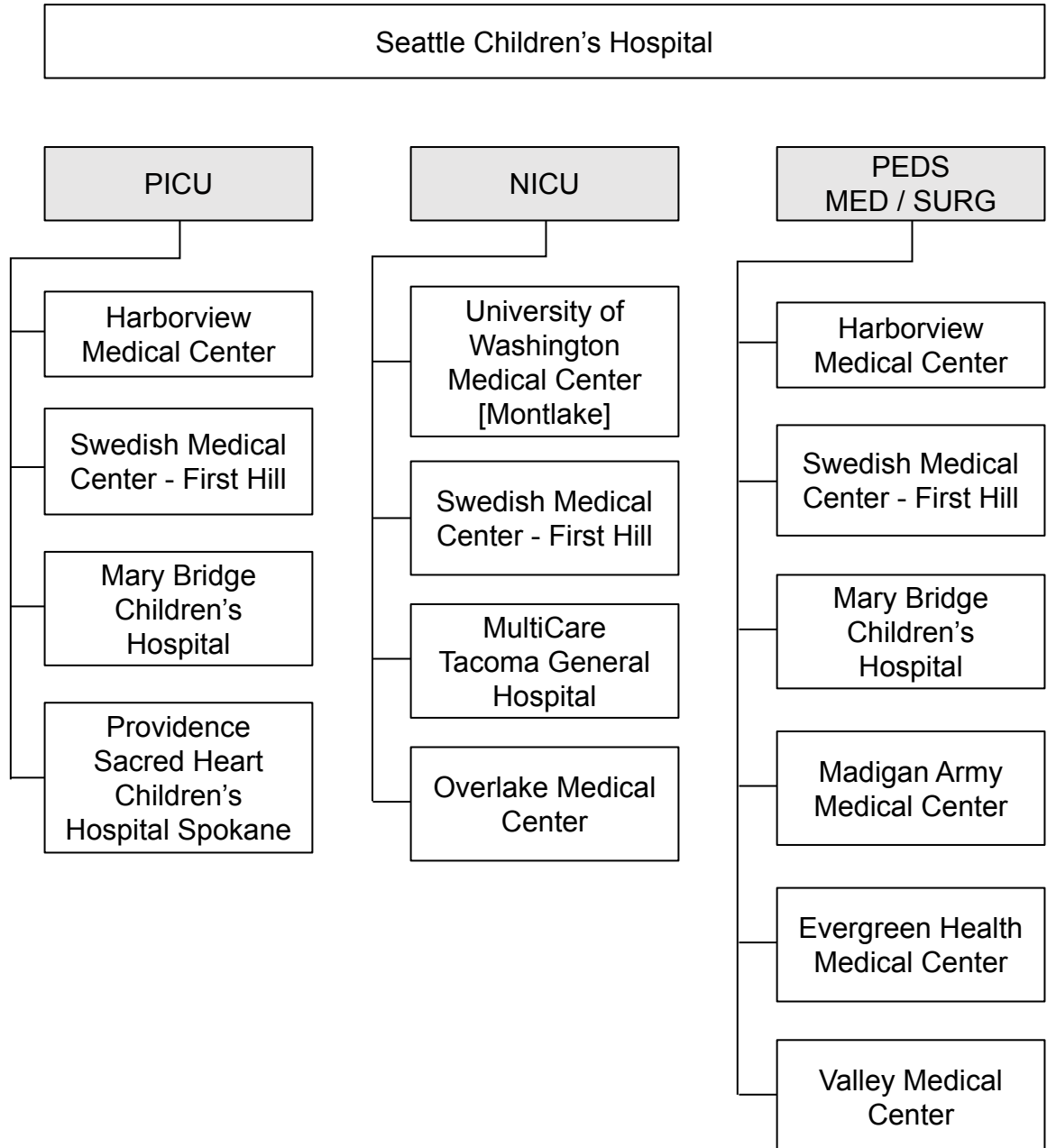
Neonatal Evacuation

Providence Everett Regional Medical Center



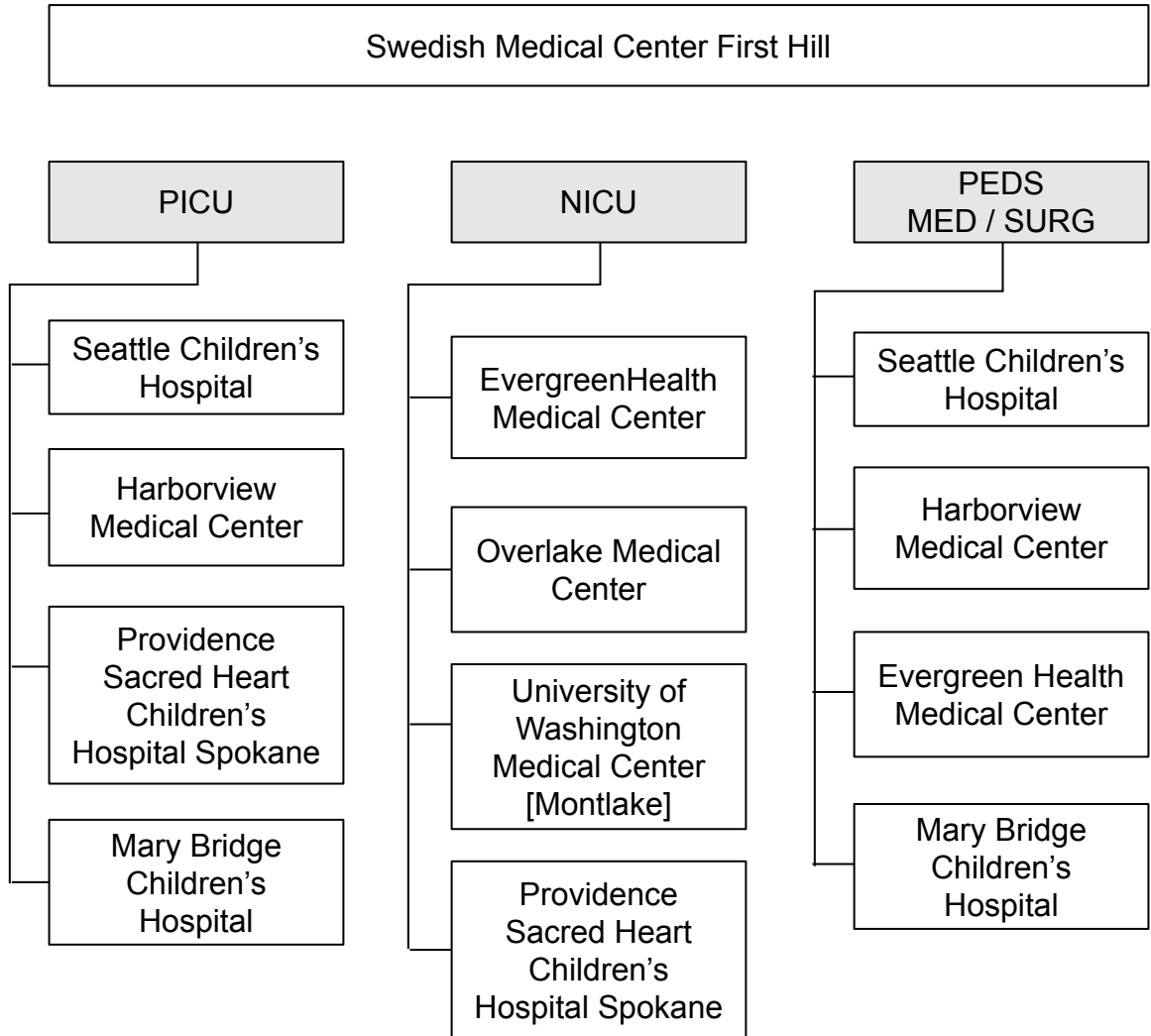
Seattle Children's Hospital

Neonatal and Pediatric Evacuation



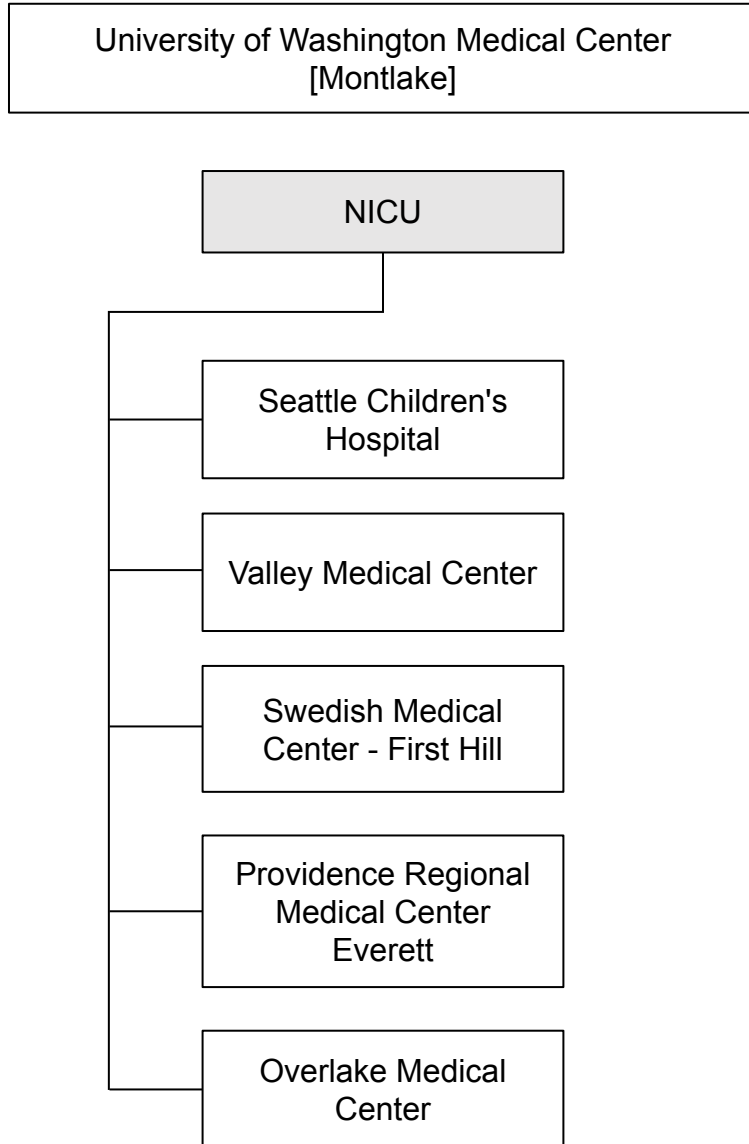
Swedish Medical Center [First Hill]

Neonatal and Pediatric Evacuation



University of Washington Medical Center [Montlake]

Neonatal Evacuation



Valley Medical Center

Neonatal Evacuation

