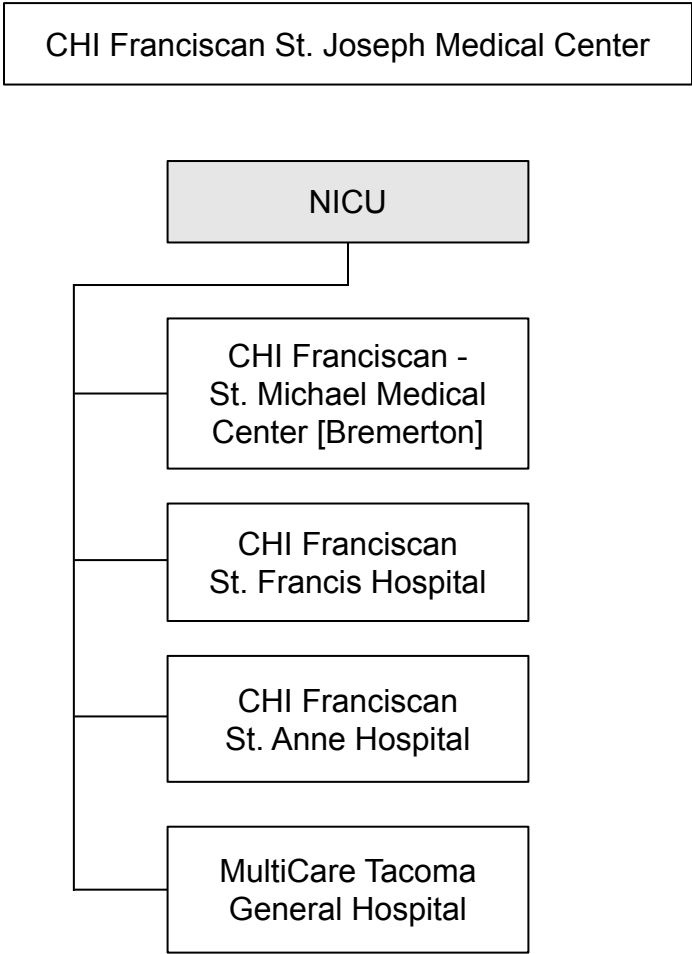


APPENDIX E

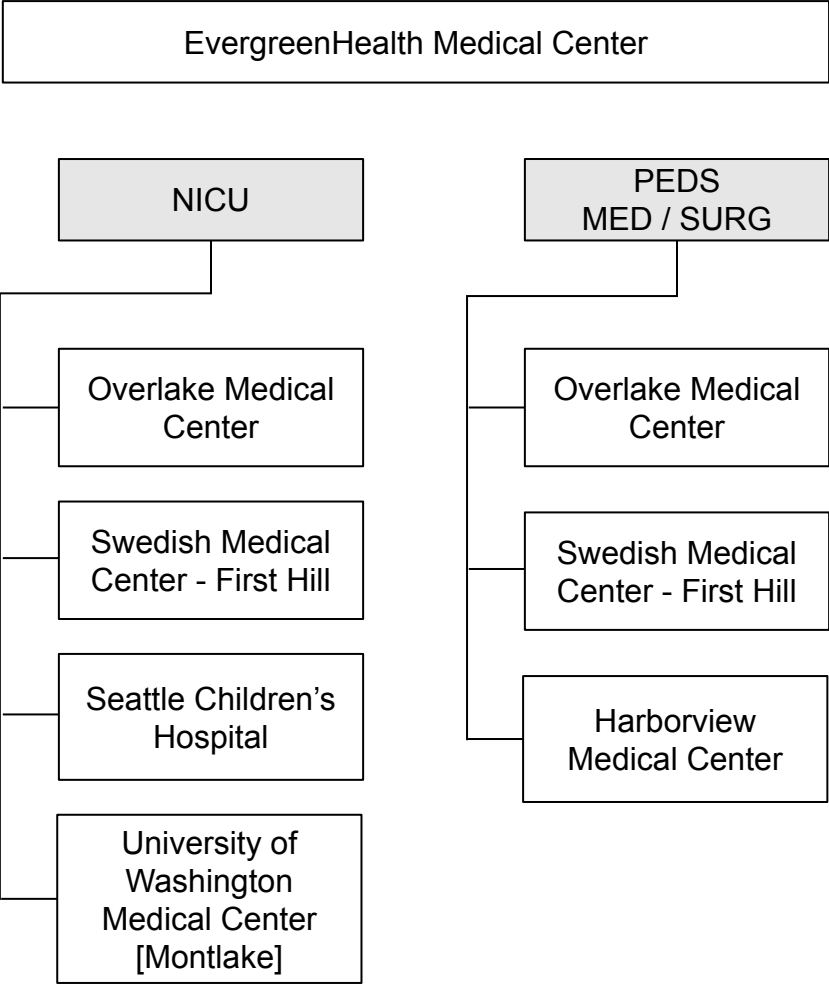
REGIONAL NEONATAL AND PEDIATRIC EVACUATION LOCATIONS

CHI Franciscan St. Joseph Medical Center
Neonatal Evacuation



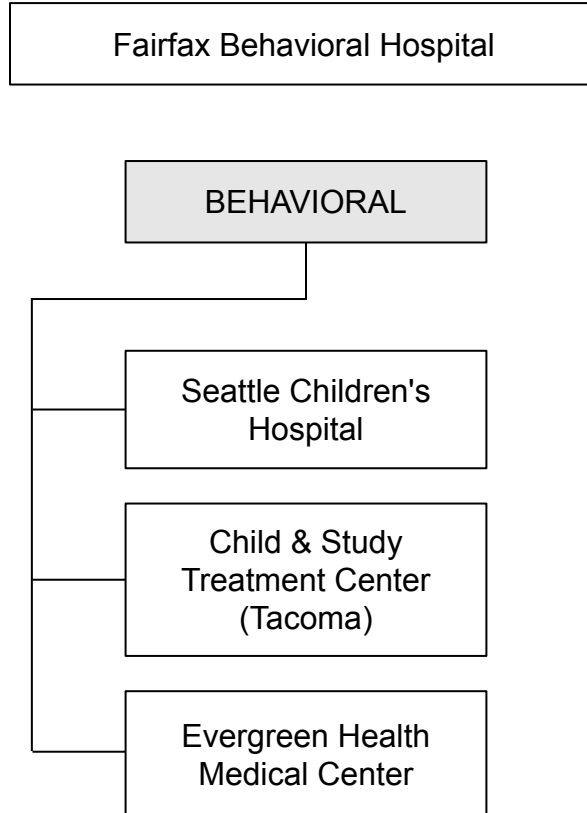
EvergreenHealth Medical Center

Neonatal and Pediatric Evacuation



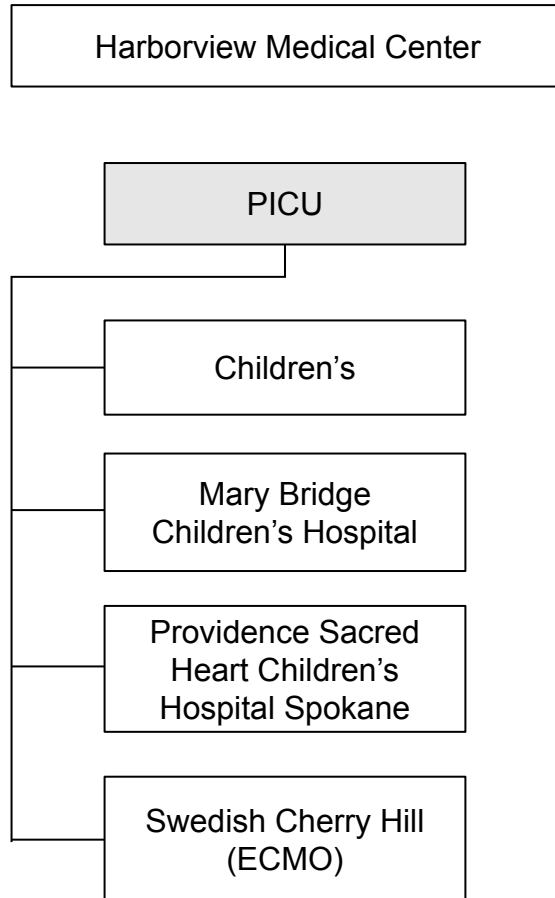
Fairfax Behavioral Hospital

Pediatric Evacuation

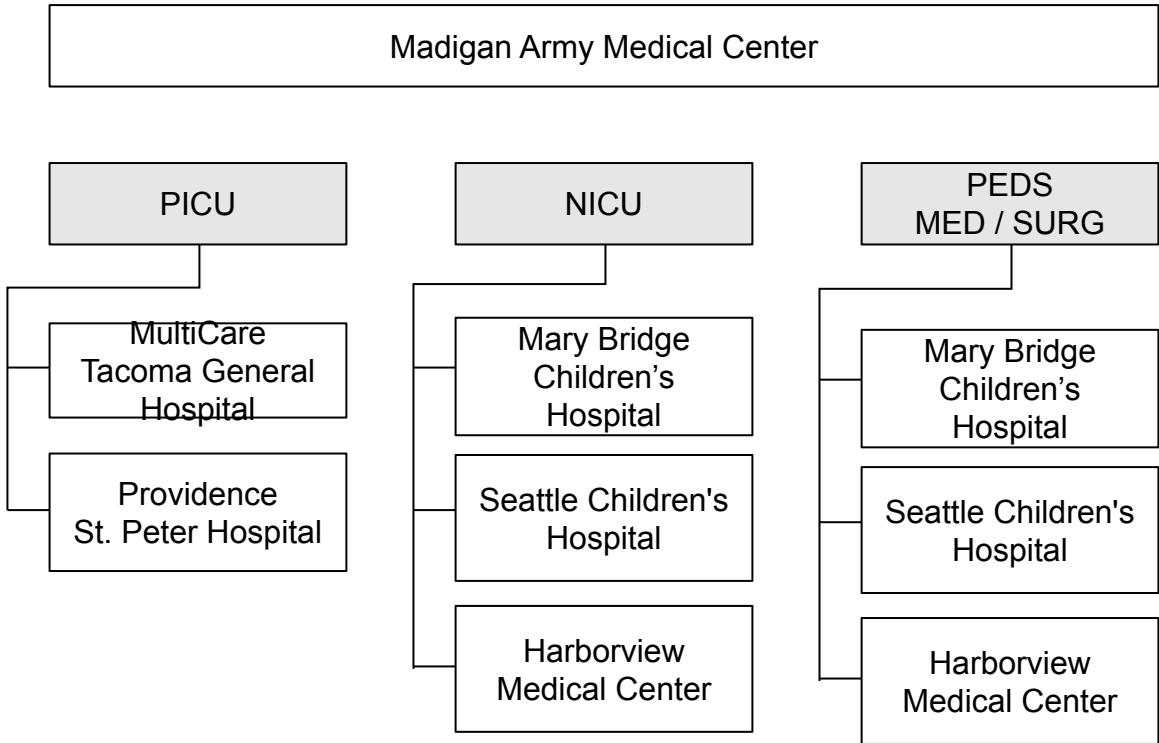


Harborview Medical Center

Pediatric Evacuation

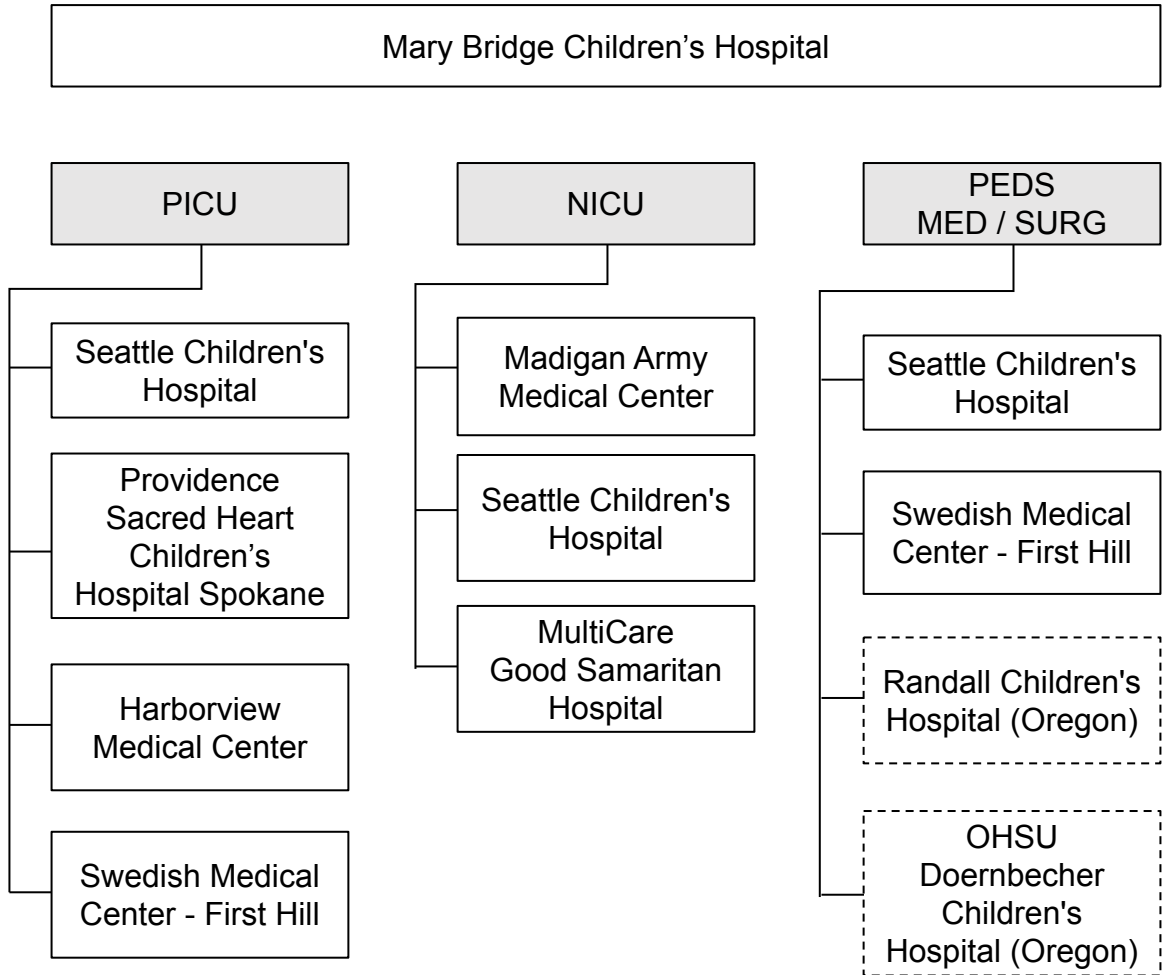


Madigan Army Medical Center (Approval Required)
Neonatal and Pediatric Evacuation



Mary Bridge Children's Hospital

Neonatal and Pediatric Evacuation



MultiCare Auburn Medical Center

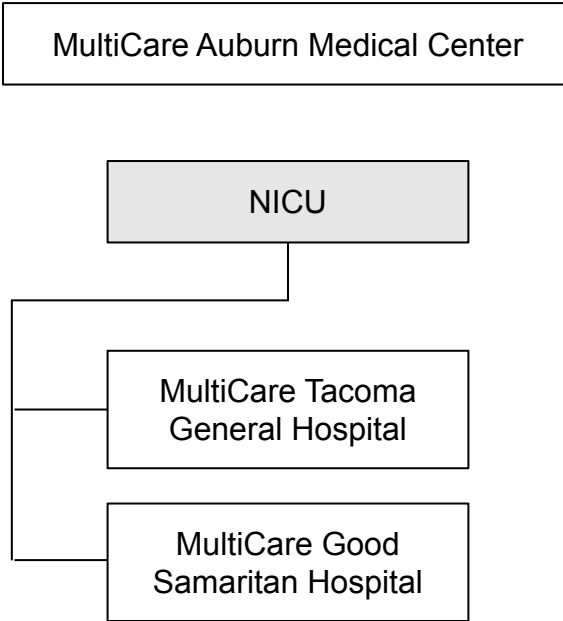
Neonatal Evacuation

MultiCare Auburn Medical Center

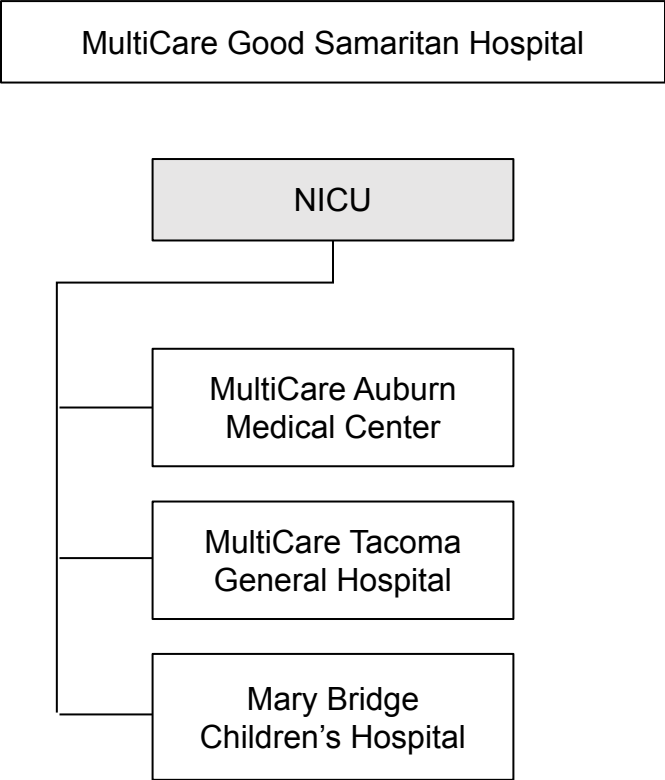
NICU

MultiCare Tacoma
General Hospital

MultiCare Good
Samaritan Hospital

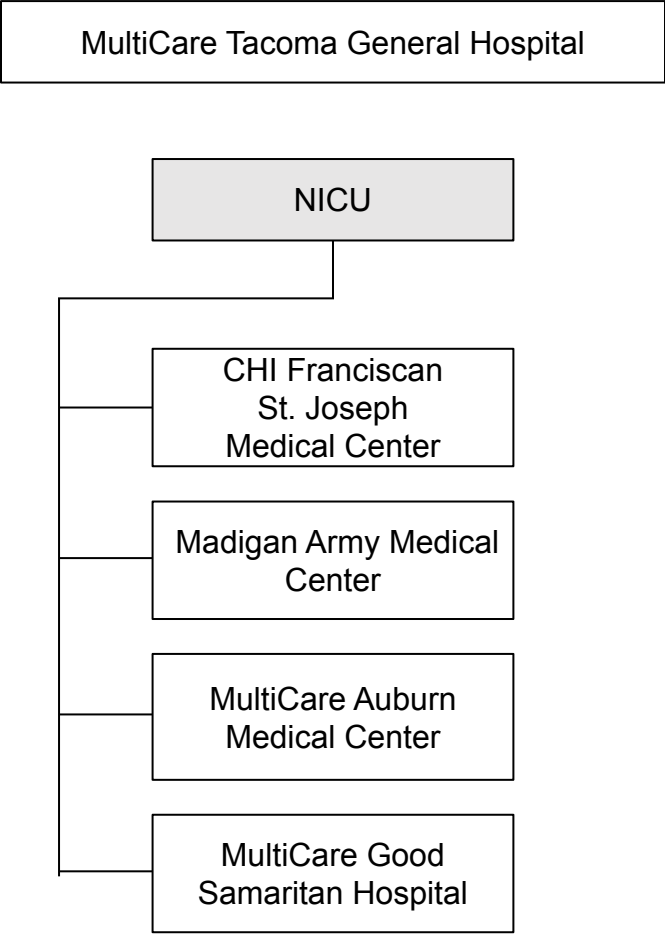


MultiCare Good Samaritan Hospital
Neonatal Evacuation

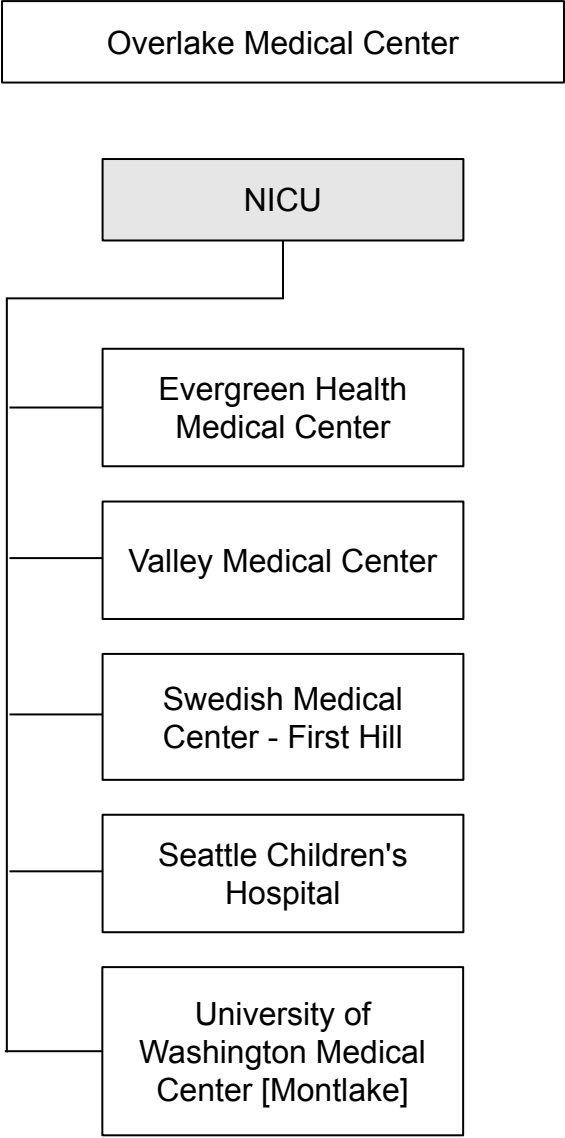


MultiCare Tacoma General Hospital

Neonatal Evacuation

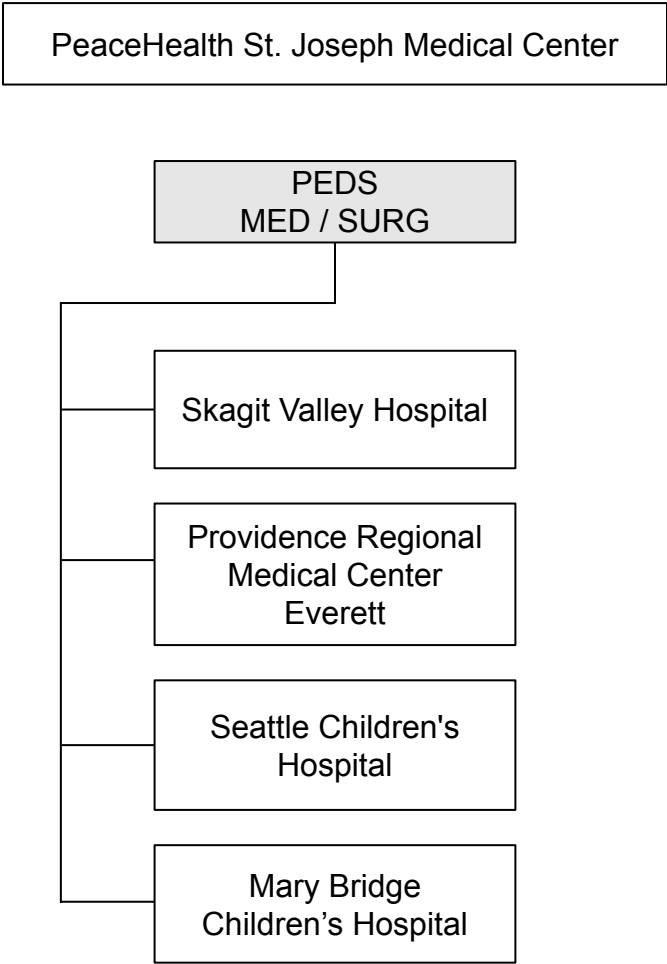


Overlake Medical Center
Neonatal Evacuation



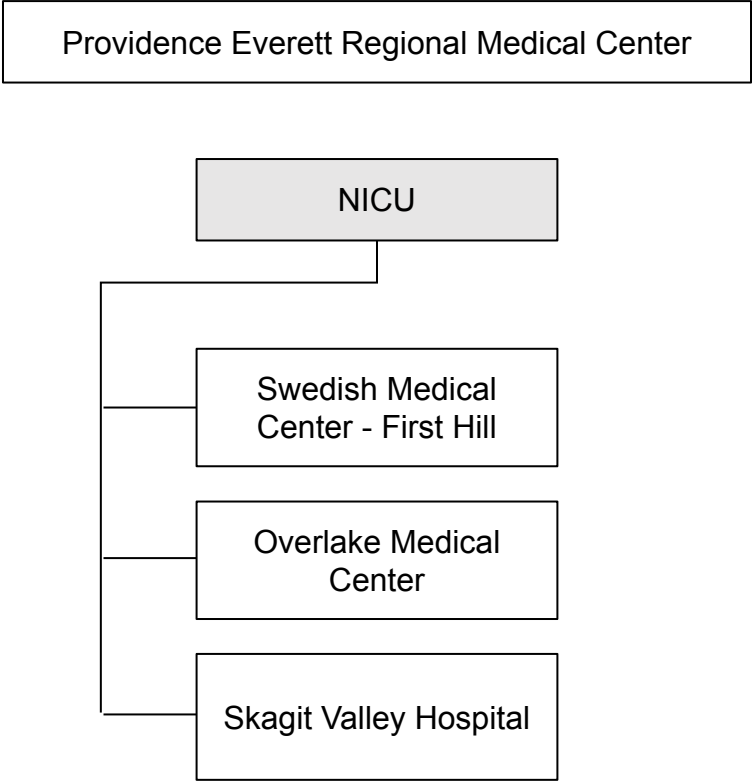
PeaceHealth St. Joseph Medical Center

Pediatric Evacuation



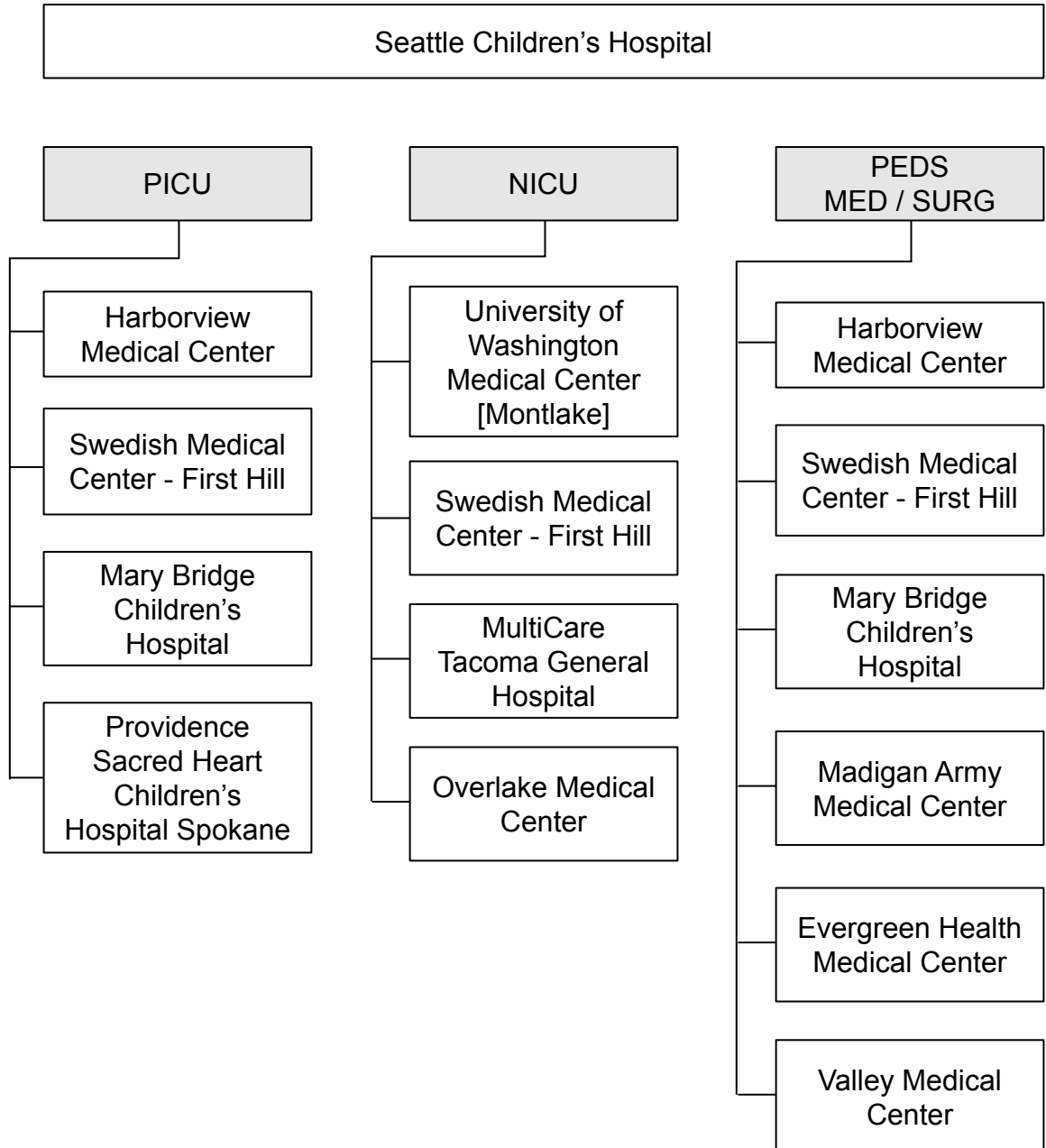
Providence Everett Regional Medical Center

Neonatal Evacuation



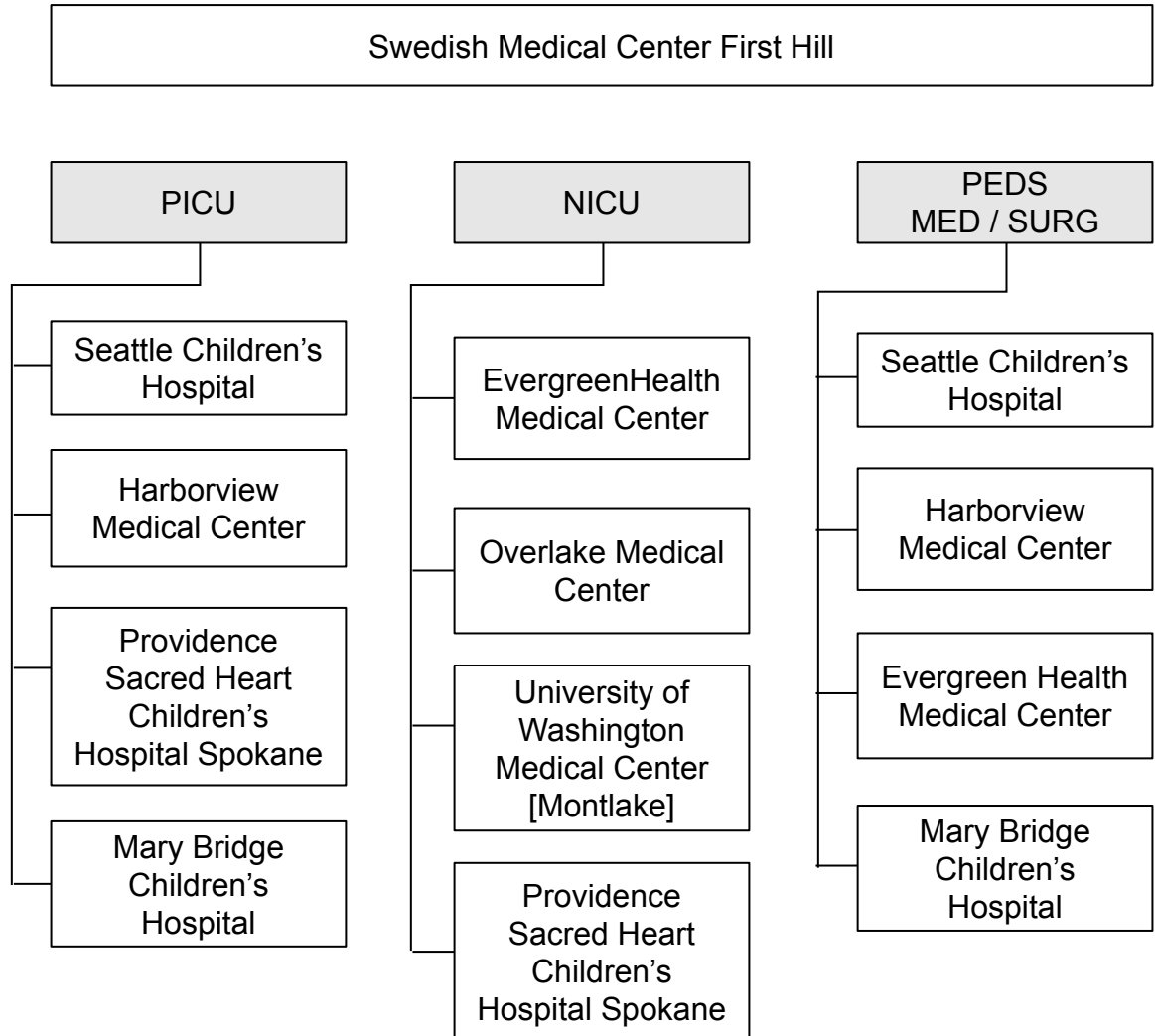
Seattle Children's Hospital

Neonatal and Pediatric Evacuation



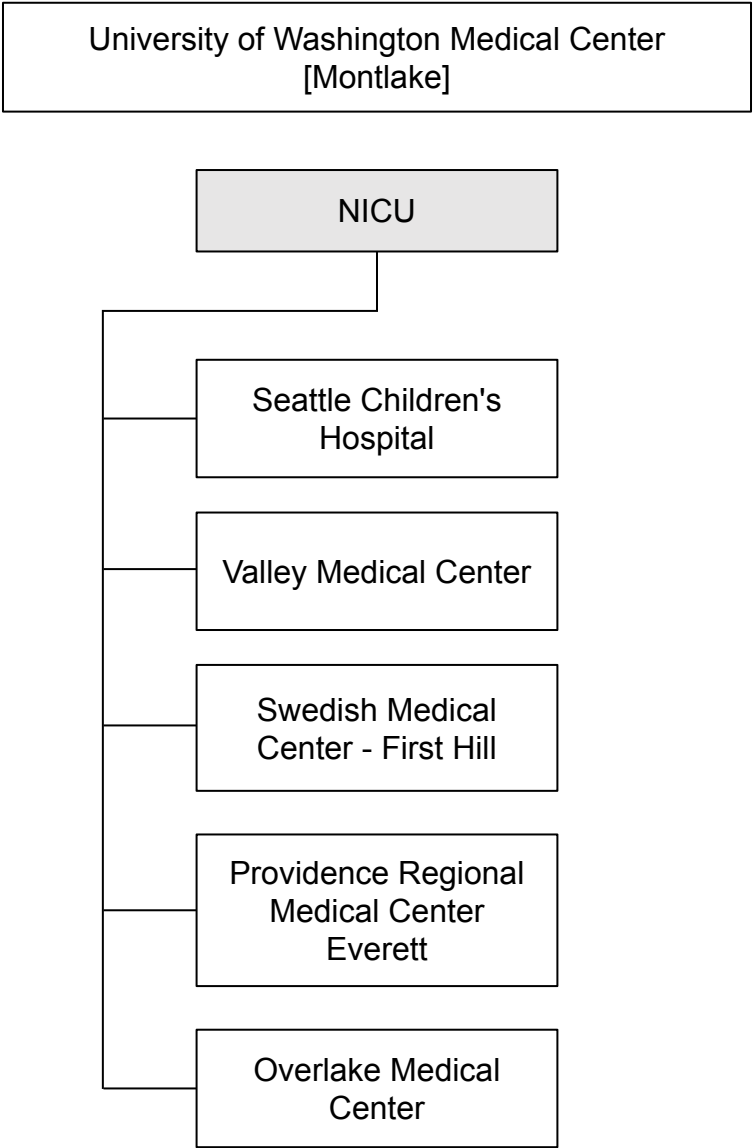
Swedish Medical Center [First Hill]

Neonatal and Pediatric Evacuation



**University of Washington Medical Center
[Montlake]**

Neonatal Evacuation



Valley Medical Center

Neonatal Evacuation

